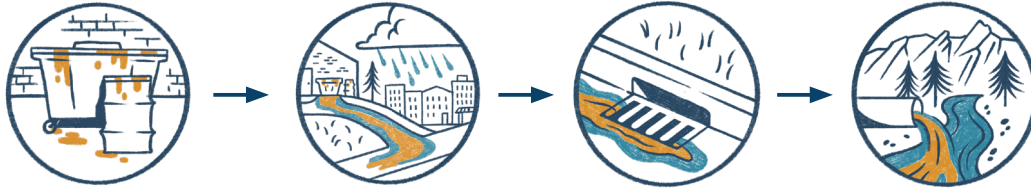




# Stormwater Protection | Gas Stations

When stormwater flows across parking lots and streets, it picks up pollutants and enters storm drains on streets and in parking lots. Pollutants entering these drains flow untreated to local waterways. Spills and leaks at gas stations can occur during fueling and contaminate stormwater runoff with toxic hydrocarbons, oil and grease, heavy metals, and other chemicals used as fuel additives.



## Outdoor Material Storage and Handling



- Take precautions and protect storm drains when handling bulk liquid deliveries (e.g., fuel).
- Keep all drain valves in liquid bulk containers and secondary containments locked in the closed position.

## Good Housekeeping

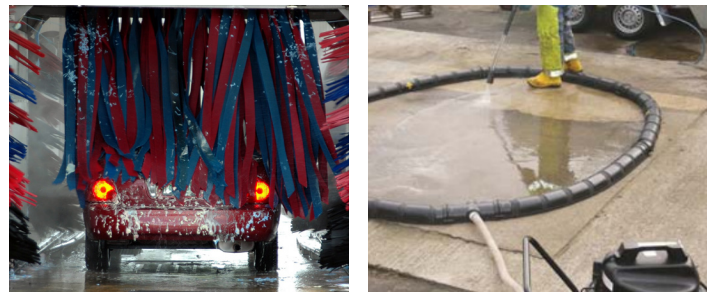
- Sweep and inspect outdoor areas to keep free from trash, dirt, litter, and debris.
- Label drains at facility to indicate where they flow: grease trap, sanitary sewer, or storm drain.

## Educate Customers



- Post signage prohibiting “topping off” and describing spill response procedures.
- Require that the person doing fueling remains present during the entire fueling operation.

## Outdoor Washing and cleaning



- Only wash vehicles and equipment in a wash bay or where water drains to a sanitary sewer.
- Collect wash water from pressure-washing activities. If using a contracted service provider, make sure they are properly collecting wash water and protecting storm drains.
- Conduct regular maintenance of sand/oil separators in designated car wash areas to ensure water does not flow or track outside the wash bay.

## Spills and Leaks

- Fuel dispensing equipment and pumps should be equipped with automatic shutoffs and overflow protection to prevent spills and leaks.
- Keep spill kits available for cleaning up spills and leaks. Train employees on the spill response plan.
- If a spill occurs, control, contain, and clean up immediately using dry cleanup practices. Clean up and dispose of dirty absorbents properly.
- Report anything but rain water entering the storm drain. If a spill reaches the storm drain system, notify your municipal stormwater staff.

**Report pollution to your municipality:**  
[www.keepitcleanpartnership.org/report](http://www.keepitcleanpartnership.org/report)