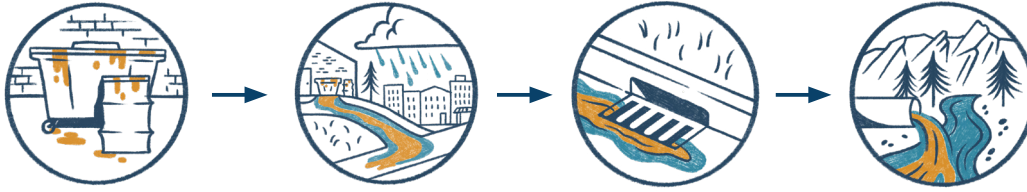


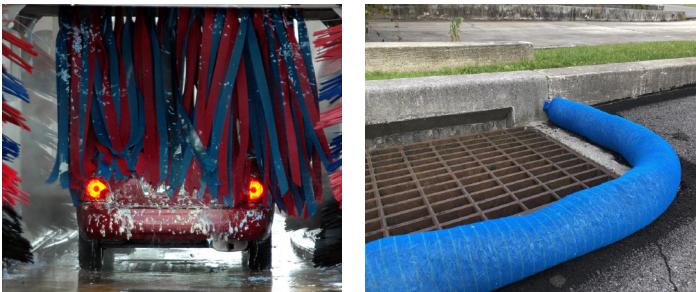


# All Businesses Can Protect Waterways

When stormwater flows across parking lots and streets, it picks up pollutants and enters storm drains on streets and in parking lots. Pollutants entering these drains flow untreated to local waterways. Receiving deliveries, unpacking products, and indoor and outdoor cleaning and maintenance can contaminate stormwater runoff with toxic chemicals, nutrients, and trash.



## Outdoor Maintenance



- Protect storm drains during outdoor construction, cleaning, and painting.
- Minimize use of fertilizers and pesticides.
- Take vehicles to a commercial car wash.
- Shovel snow onto vegetated areas.
- Use deicers sparingly.

## Dispose Responsibly



- Keep recycling clean and separate from trash.
- Provide composting bins for your employees and if possible, your customers.
- Participate in the Hazardous Waste Disposal for Businesses program at the Hazardous Materials Management Facility (HMMF) for light bulbs, cleaners, pesticides, paint, auto fluids, and batteries. Use the Center for Hard-to-Recycle Materials for electronics, plastics, Styrofoam, and packaging material.

Learn more about the HMMF at:  
[boco.org/hmmf](http://boco.org/hmmf)

## Indoor Cleaning



- Sweep up dirt and materials to place in trash.
- Wash compost containers inside using sinks. Never allow any wash water to enter roads and storm drains.

## Outdoor Cleaning



- Sweep and pick up all outdoor areas (dumpster, break area, patios, parking lot).
- Keep lids closed on dumpsters and recycling containers. Contain liquids before placing in trash.
- If using soap and water, collect all water that contains soap and dispose of it inside.

## Spills and Leaks

- Use dry cleanup methods (sweeping, absorbents) to clean up spills immediately.
- Report anything but rain water entering the storm drain. If a spill reaches the storm drain system, notify your municipal stormwater staff.

Report pollution to your municipality:  
[www.keepitcleanpartnership.org/report](http://www.keepitcleanpartnership.org/report)