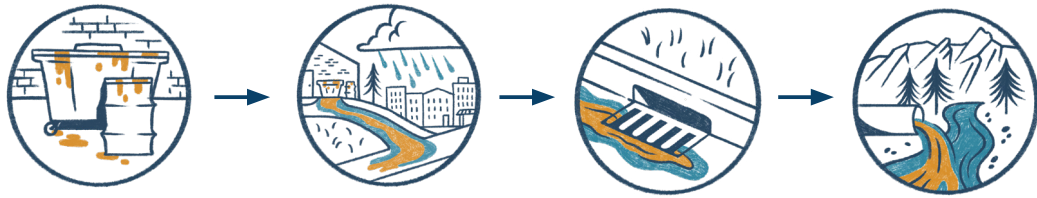




Stormwater Protection | Food Trucks



Contaminants from food trucks can pollute our waterways with food waste, oil, grease, detergents, and litter.

Indoor Cleaning

- Do not wash kitchen equipment, such as floor mats or fume hood screens, outdoors. Wash water must not be allowed to flow outdoors or enter storm drains.
- Discharge wash water from cleaning equipment and gray water from sinks on truck to an indoor sink, toilet, or other drain connected to the sanitary sewer.

Fats, Oil, and Grease (FOG)

- Never pour FOG into a sink, floor drain, garbage can, dumpster, or outdoor drain.
- Dispose of all wastewater containing FOG into a drain with a grease trap or intercep-tor. Regularly clean and maintain grease traps and interceptors.
- Properly store FOG in covered and sealed containers.
- Keep outdoor grease bin lids closed and covered at all times. Empty often to avoid spills.

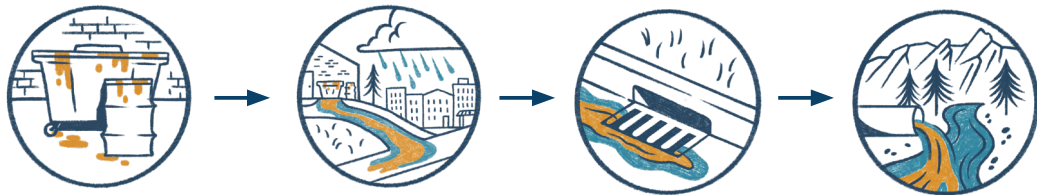
Spills and Leaks

- Use dry cleanup methods (sweeping, absorbents) to clean up spills immediately.

If a spill reaches the storm drain system, notify your municipality. Find contact information at: www.keepitcleanpartnership.org/report



Stormwater Protection | Food Trucks



Contaminants from food trucks can pollute our waterways with food waste, oil, grease, detergents, and litter.

Indoor Cleaning

- Do not wash kitchen equipment, such as floor mats or fume hood screens, outdoors. Wash water must not be allowed to flow outdoors or enter storm drains.
- Discharge wash water from cleaning equipment and gray water from sinks on truck to an indoor sink, toilet, or other drain connected to the sanitary sewer.

Fats, Oil, and Grease (FOG)

- Never pour FOG into a sink, floor drain, garbage can, dumpster, or outdoor drain.
- Dispose of all wastewater containing FOG into a drain with a grease trap or intercep-tor. Regularly clean and maintain grease traps and interceptors.
- Properly store FOG in covered and sealed containers.
- Keep outdoor grease bin lids closed and covered at all times. Empty often to avoid spills.

Spills and Leaks

- Use dry cleanup methods (sweeping, absorbents) to clean up spills immediately.

If a spill reaches the storm drain system, notify your municipality. Find contact information at: www.keepitcleanpartnership.org/report