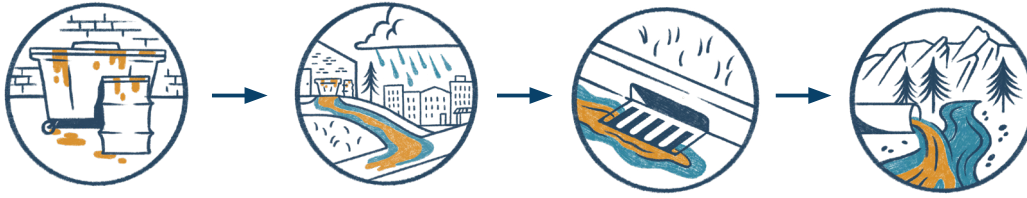




# Stormwater Protection | Restaurants

When stormwater flows across parking lots and streets, it picks up pollutants and enters storm drains on streets and in parking lots. Pollutants entering these drains flow untreated to local waterways. Contaminants from restaurants and other food service facilities, operations, and activities can pollute our waterways with food waste, oil, grease, detergents, and litter.



## Indoor Cleaning



- Discharge wash water from cleaning equipment to an indoor sink, toilet, or other drain connected to the sanitary sewer.
- Wash compost containers inside using sinks or floor drains. Never allow wash water to enter roads and storm drains.

## Fats, Oil, and Grease (FOG)



- Never pour FOG into a sink, floor drain, garbage can, dumpster, or outdoor drain.
- Dispose of all wastewater containing FOG into a drain with a grease trap or interceptor. Regularly clean and maintain grease traps and interceptors.
- Properly store FOG in covered and sealed containers.
- Keep outdoor grease bin lids closed and covered at all times. Empty often to avoid spills.

## Outdoor Cleaning



- Keep lids closed on dumpsters and recycling bins.
- Check bins for leaks. Do not place liquids in the dumpster unless they are contained.
- Use dry cleanup methods (sweeping, absorbents) on patios and sidewalks.
- Do not wash kitchen equipment, such as floor mats or fume hood screens, outdoors.

## Spills and Leaks



- Keep outdoor areas free from grease and food spills.
- Use dry cleanup methods (sweeping, absorbents) to clean up spills immediately.
- If a spill reaches the storm drain system, notify your municipality. Find contact information at:

[www.keepitcleanpartnership.org/report](http://www.keepitcleanpartnership.org/report)