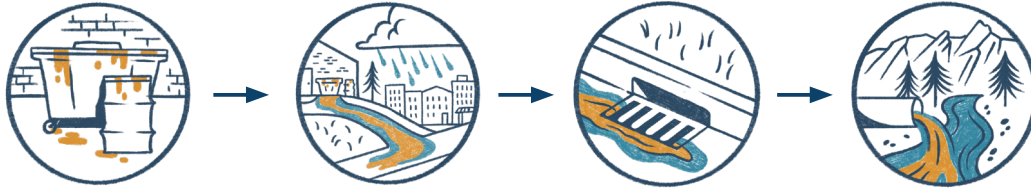




Stormwater Protection | Vehicle Service Facilities

When stormwater flows across parking lots and streets, it picks up pollutants and enters storm drains on streets and in parking lots. Pollutants entering these drains flow untreated to local waterways. Vehicle repair, fluids replacement, and equipment storage can contaminate stormwater runoff with hydrocarbons (motor oil, gasoline, diesel fuel, and grease), heavy metals (lead, copper, and zinc), antifreeze, solvents, and other toxic chemicals.



Good Housekeeping



- Keep outdoor areas free from trash, dirt, litter, and debris.
- Sweep and inspect parking areas regularly.
- Label drains within the facility boundary to indicate whether they flow to a grease trap, sewer, or storm drain.

Material Storage, Handling, and Disposal



- Take precautions and protect storm drains when handling bulk liquid deliveries (e.g., oil).
- Keep all drain valves in liquid bulk containers and secondary containments locked in the closed position.
- Utilize the Hazardous Waste Disposal for Businesses program at the Hazardous Materials Management Facility (HMMF) for materials including antifreeze, motor oil, and oil filters.

Washing and Cleaning



- Only wash vehicles and equipment in a wash bay or where water drains to a sanitary sewer.
- Collect wash water from pressure-washing activities. If using a contracted service provider, make sure they are properly collecting wash water and protecting storm drains.
- Conduct regular maintenance of sand/oil separators in designated car wash areas to ensure water does not flow or track outside the wash bay.

Spills and Leaks

- Perform maintenance and repair work inside. Only activities that do not involve fluids or dust should be performed outdoors.
- Do not store leaking vehicles or equipment outdoors.
- Keep spill kits available for cleaning up spills and leaks, and train employees on the spill response plan.
- If a spill occurs, control, contain, and clean up immediately using dry cleanup practices. Clean up and dispose of dirty absorbents properly.

Report pollution to your municipality:
www.keepitcleanpartnership.org/report

Learn more about the HMMF at:
boco.org/hmmf