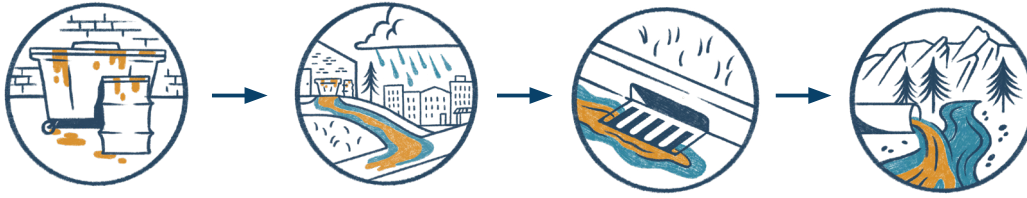




# Stormwater Protection | Cleaning Services

When stormwater flows across parking lots and streets, it picks up pollutants and enters storm drains on streets and in parking lots. Pollutants entering these drains flow untreated to local waterways. Cleaning operations including pressure washing, carpet cleaning, and home cleaning services can contaminate stormwater runoff with sediment, detergents, oils, and toxic chemicals.



## Outdoor Material Storage and Handling



- Cover and provide secondary containment for all materials stored outside.
- Take precautions and protect storm drains when loading or unloading bulk liquids.

## Washing and Cleaning



- Use dry cleanup methods, such as a broom and dustpan, whenever possible.
- Once wash water is collected, dispose of it properly. Collected wash water may be disposed of into a sanitary sewer drain at the job site (with permission) or at the contractor's place of business.
- Wash all vehicles and machines in a designated washing area that drains to the sanitary sewer, such as a commercial or designated car-washing facility.

## Wastewater and Chemical Disposal



- Filter carpet cleaning wastewater before discharging it to the sanitary sewer - fibers and other debris in the wastewater can clog pipes.
- Cleaning products that are expired or unneeded should be disposed of at the Hazardous Materials Management Facility. Never discharge wastewater, wash water, or chemicals to streets or storm drains.

## Spills and Leaks



- Maintain cleaning equipment (tanks, hoses, and fittings) to prevent wastewater leaks.
- Securely store all materials and equipment in vehicles during transport.
- Use dry cleanup methods (sweeping, absorbents) to clean up spills immediately.
- If a spill reaches the storm drain system, notify your municipality. Find contact information at:

[www.keepitcleanpartnership.org/report](http://www.keepitcleanpartnership.org/report)