

Keep it Clean Partnership

formerly known as the
Watershed Approach to Stream Health (WASH)
Project

A partnership of communities in the Boulder and St. Vrain watersheds -
working to protect our water quality



2006 Annual Report

Boulder County • City of Boulder • City of Longmont • City of Louisville • Town of Erie • Town of Superior



**KEEP IT CLEAN
PARTNERSHIP**

Communities in the Boulder and
St. Vrain watersheds working
together to protect our water quality.

3450 Broadway, Boulder, CO 80304 • Phone: 303-441-1439 • Fax: 303-441-1468 • E-mail: jljopitz@co.boulder.co.us



Keep it Clean Partnership
ANNUAL REPORT for 2006
TABLE OF CONTENTS

Executive Summary	1
Background and Project Overview	5
<u>2006 Activities</u>	
Minimum Control Measure 1 Public Education and Outreach	11
Minimum Control Measure 2 Public Involvement and Participation	16
Minimum Control Measure 3 Illicit Discharge Detection and Elimination	21
Minimum Control Measure 4 Construction Site Stormwater Runoff Control	26
Minimum Control Measure 5 Post-Construction Stormwater Management	28
Minimum Control Measure 6 Pollution Prevention and Good Housekeeping for Municipal Operations	30
<u>Supporting Documents</u>	
Permit Annual Report Table	34
Project Working Agreement	50
Partner Contact Information	51
<u>Appendices</u> (available electronically on www.KeepitCleanPartnership.org)	
A. City of Boulder’s Stormwater Education Program 2006 Progress Report	
B. Partners for a Clean Environment (PACE) 2006 Progress Report	

Executive Summary

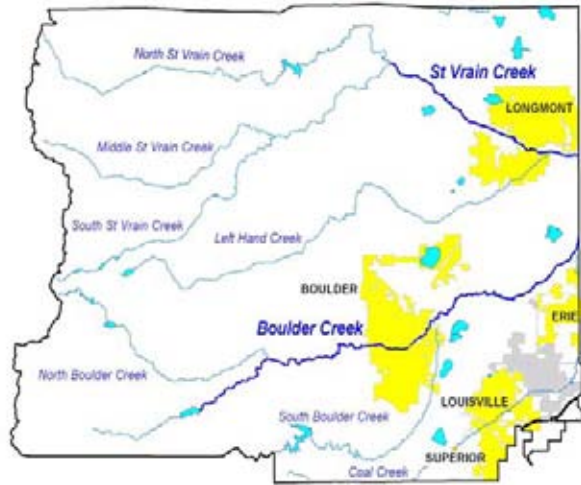
Keep it Clean Partnership 2006 Annual Report



The Watershed Approach to Stream Health (WASH) Project has changed its name and look. WASH is now the “The Keep it Clean Partnership” (KICP). Gone is the familiar waterdrop, replaced with the “Keep It Clean” logo. The change was made to provide a more cohesive look and to better serve the public and participating communities.

The Keep it Clean Partnership (KICP) is a regional stormwater quality management program serving the communities of Boulder, Longmont, Louisville, Erie, Superior, and Boulder County (Partners). This innovative, award-winning program is leading Colorado in addressing water quality issues through watershed management.

The primary objective is to use a collaborative approach in creating cost-effective solutions to implement a regional stormwater management program to comply with federal Phase II Municipal Stormwater Regulations and address broader water quality and watershed issues. The Phase II regulations derived from the federal Clean Water Act require communities in urbanized areas to control pollutants from their storm sewer systems. In Colorado, the Department of Public Health and Environment (CDPHE) administers the Phase II regulations.



Leveraged Resources and Cost Savings

The KICP programs emphasize cost-effectiveness by sharing programs, using common strategies and existing programs. One example of leveraging an existing program includes expanding the Partners for a Clean Environment (PACE) Program to include stormwater pollution prevention strategies in its certification criteria for municipal operations. Another example is contracting with the City of Boulder to implement its existing Water Quality Education programs throughout the KICP program area. The combination of shared programs and use of existing programs has provided KICP with a comprehensive stormwater management program at a cost 30-50% less than implementing individual community programs.



In 2006, the KICP budget was \$367,172, of which \$38,000 (10.4%) was proportionately reimbursed to each of the Partners. The majority of the reimbursement represents the unspent contingency funds, which consist of 10% of the annual budget.



The KICP has continued to effectively leverage resources through grant funding and staff expertise. Since its inception in 2001, the Keep it Clean Partnership has received approximately \$165,000 in grant funds.

In addition, KICP benefits from the combined expertise of the KICP workgroup members. These workgroups consist of staff from the Partner communities and are responsible for developing and implementing the KICP programs. Workgroup members include experts in the fields of drainage and environmental engineering, education and outreach, chemistry, geology, biology, and planning. This expertise would be difficult for any individual community to assemble on its own.

Permit Compliance

Each of the Partners achieved full regulatory with their Phase II municipal stormwater discharge permit through implementation of KICP programs.



Evaluation

An independent evaluation of the programs was completed. The evaluation was highly complementary with favorable findings. A quote from the report states, *“The KICP and all the Partners have been very successful at developing and implementing the first-term program, and the Partnership appears to be an effective framework for implementing the programs. This is specifically apparent with respect to staff resources and structure, leadership, and funding. All Partners interviewed strongly felt that WASH had done a very good job of implementing the common and shared elements. The WASH and Partner programs appear well-positioned to use the next permit term to focus their efforts on specific water quality problems or areas of concern.”* However, a number of improvements were identified, including additional enforcement of erosion control requirements at construction sites, and some improvements needed to improve municipal good housekeeping. The report also suggested a more cohesive “branding” of program looks and messages, and thus the new moniker, “Keep it Clean Partnership” and logo.

Permit Planning for 2008-2012

The Phase II stormwater discharge permit for the Partners expire at the end of 2007. To prepare for the second permit term, the Partners hosted a panel discussion of water quality issues. Twenty-five experts from various federal, state, and local agencies and private environmental firms attended. The result of the meeting was the development of a list of the top water quality concerns. These water quality priorities will be incorporated into the 2008-2012 KICP Plan and in the second permit term application, where appropriate.

In addition to initiating the updated KICP Plan, the 2008-2012 intergovernmental agreement (IGA) was drafted and sent to each Partner community for review. It is expected that the new IGA will be signed in the spring of 2007.

Regional Participation

Additional regional activities that the KICP participated in include:

- ◆ Participated in the Segment 14 Stakeholder’s Group, sponsored by the City of Denver. A major focus for 2006 was understanding how dry-weather discharges contribute to

exceedances of the E. coli stream standard of 126 cfu/100ml and the development of a Total Maximum Daily Load (TMDL) for discharges to the South Platte River.

- ◆ Assisted with the formation of the Colorado Stormwater Council, an organization that will focus on municipalities with stormwater permits.
- ◆ Submitted data to the Colorado Water Quality Monitoring Council Data Sharing Network Project.
- ◆ Attended a state-sponsored social marketing symposium.

Community Outreach and School Education Programs

69,449 brochures and inserts were distributed.

26,350 take-home materials for the *Get to Know Your H₂O* program were handed out.

3,808 students participated in stormwater education programs, and **216** classroom programs were conducted.

652 storm drains were labeled with the message, “Dispose no Waste, Drains to Creek”.

2,108 door hangers were distributed as part of the storm drain marking program.

6,166 residents visited the stormwater booths at several community events.

36,000 visits to www.KeepitCleanPartnership.org.

58 residents participated in the Neighborhood Stewardship Program.

234 copies of *Adventures of H₂O Jo* videos were distributed.

368,000 cars travel past the ‘Keep it Clean’ tributary signs each day.



Stormwater Pollution Prevention Programs for Private and Public Sectors



209 restaurant and **105** vehicle service facility stormwater pollution prevention evaluations were completed.

150 municipal employees received training in stormwater pollution prevention.

49 municipal facilities were visited.

4 newsletters were mailed to **94** municipal employees.

Erosion Control, Permanent Water Quality Structures, and Illicit Discharge Prevention

129 participants were provided with construction erosion control training.

9 municipal employees attended a web cast on streambed restoration and stabilization.

31 municipal employees heard a presentation from the Colorado



departments of Transportation and Public Health and Environment on construction compliance and discussed contract language for government construction projects.

15 county employees attended a discussion on rural road construction and maintenance.

150 municipal employees were trained about illegal discharge identification.

186 spills received response.



The Future

The KICP will continue to implement the shared and common programs for the benefit of all of the Partners. In addition, the KICP will enter into the second five-year IGA and develop a KICP for 2008-2012. The plan will be submitted to the CPDHE Water Quality Division with the permit application in September 2007.

In addition to common and shared programs, each individual Partner will be responsible for completion of the following tasks in 2007:

- ◆ Implement the individual ordinances adopted in 2004 and related procedures, such as:
 - Review and track erosion control plans and proposed permanent water quality structures.
 - Conduct and track construction and post-construction site inspections.
 - Respond, enforce, and track all illegal discharges.
 - Maintaining storm drainage outfall maps.
 - Ensure municipal operations are in compliance with stormwater regulations.
- ◆ Participate in the development of the 2008-2012 KICP Plan.

The entire annual report can be found at www.KeepItCleanPartnership.org

Background and Project Overview

The Keep it Clean Partnership (KICP), formerly known as The Watershed Approach to Stream Health (WASH) Project, grew out of regional stormwater round-table discussion and a watershed management focus group conducted in 1999. Water quality and stormwater professionals representing various communities in the Boulder Creek and St. Vrain watersheds participated in those meetings to help develop the goals, objectives, and project focus that are now incorporated into the Keep it Clean Plan.

The Keep it Clean Partners (Partners) include Boulder County; the cities of Boulder, Longmont, and Louisville; and the towns of Superior and Erie.

The Keep it Clean Partnership uses a unique, collaborative approach to involve various levels of government in creating cost-effective solutions to stormwater problems. The Keep it Clean Partnership embodies the spirit of the watershed approach envisioned in the federal Clean Water Act and adopted in the Boulder Valley Comprehensive Plan.

The primary goal of the Keep it Clean Partnership is to implement a regional stormwater management program, not only to comply with federal Phase II stormwater regulations, but also to address broader water quality issues.

The Keep it Clean Plan

In 2002, the Keep it Clean Partners began developing the five-year Keep it Clean Plan, which outlined the Keep it Clean programs and budget. Emphasis was placed on developing programs that met federal Phase II Municipal Stormwater Regulations; use existing, successful programs; address community water quality goals; and allow for flexibility within jurisdictional oversight.

Implementation of the Keep it Clean Plan is governed by the five-year intergovernmental agreement (IGA) and supporting bylaws, which were executed in January 2003. The IGA identifies the Steering Committee as the managing entity; it is made up of one voting representative from each Partner community. The Steering Committee directs the Keep it Clean Partnership coordinator, who provides administrative and management services to implement the Keep it Clean Plan and budget. The IGA identifies Boulder County Public Health (BCPH) as the contracting/fiscal agent. BCPH is also the employer of the Keep it Clean Partnership coordinator. The Keep it Clean Partners participate in workgroups, which direct implementation of the Keep it Clean Plan.

In 2007, the Keep it Clean Partners will enter into a second five-year IGA and apply for the second five-year Phase II municipal stormwater permit with the Colorado Department of Public Health and Environment (CDPHE).

The Phase II regulations call for implementation of six minimum control measures (MCMs) to address the impact of stormwater runoff on water quality and stream health. These programs are described in detail in the Keep it Clean Plan.

Implementation of the Keep it Clean Plan

Implementation of each of the programs outlined in the Keep it Clean Plan uses a variety of approaches, including the following:

- **Common Elements:** Program elements that have common themes and common implementation procedures. An example is the development of common ordinance language.
- **Individual Programs:** Program elements that are exclusively the responsibility of individual Partners to implement. An example is the local adoption and enforcement of an erosion control ordinance.
- **Shared Programs:** Program elements that are shared by all Partners. The following two contracts are examples:
 - ◆ The City of Boulder Water Education Program provides community outreach materials and school programs in each of the Partner jurisdictions.
 - ◆ Boulder County's Partners for a Clean Environment (PACE) Program provides outreach materials and conducts site visits for Keep it Clean Partners, addressing commercial and municipal operations.

The six minimum control measures (MCMs) required in the Municipal Stormwater Discharge Permit are outlined below and are included in the Keep it Clean Plan:

1) MCM 1 - Public Education and Outreach

- School-Based Education Program (water quality curriculum and classroom programs)
- Business Education Program (see MCM 3)

2) MCM 2 - Public Participation and Involvement

- Storm Drain Stenciling Program
- Illicit Discharge Hotline (see MCM 3)
- Annual Public Meetings to Solicit Input on Keep it Clean Programs

3) MCM 3 - Illicit Discharge Detection and Elimination

- Legal Prohibition of Illicit Discharges (ordinances and other code development)
- Illicit Discharge Enforcement (hotline, spill response plan, inspections, enforcement, and data tracking)
- Community-Based Education Program (brochures, fact sheets, and other materials)
- Business Education
- Storm Sewer System Mapping

4) MCM 4 - Construction Site Stormwater Runoff Control

- Training and Education for Construction Site Operators and Inspectors
- Erosion Control Ordinance (required erosion control for construction sites)
- Erosion Control Standard Operating Procedures (SOP) (outlines application and approval procedures for construction site stormwater management plan submittals)
- Erosion Control Inspection and Enforcement (implementation of erosion control ordinance)
- Public Input

5) MCM 5 - Post-Construction Stormwater Management

- Post-Construction Ordinance (required treatment of stormwater runoff)
- Design Criteria and Standards (outlines type of stormwater treatment or best management practice [BMP] required)
- Development Review (ensures appropriate design of BMPs)
- BMP Operation and Maintenance (requires long-term maintenance of BMPs)

6) MCM 6 - Pollution Prevention and Good Housekeeping for Municipal Operations

- Training and Certification for Municipal Employees (site-specific water pollution prevention activities)

The Partner communities fund the common and shared program costs. Cost allocation is based on each Partner's urbanized population, as outlined in the Keep it Clean IGA. Costs to implement the individual community programs are the responsibility of each individual community. The total annual average cost to implement the shared and common elements of the Keep it Clean Plan is approximately \$380,000. This includes 3.25 full-time employees (FTEs) at a cost of \$220,000. The staff currently includes 1.50 FTE education positions, 0.75 FTE Keep it Clean coordinator position, and 1.00 FTE to support the PACE Program.

2006 Highlights

Through implementation of the Keep it Clean Plan, all Partners achieved compliance with their stormwater discharge permits. A summary of major tasks completed in 2006 follows:

Evaluation

In 2006, the Partners hired Wes Ganter, with PGA Consultants to independently evaluate the Keep it Clean programs. The majority of the report was highly complimentary of the Keep it Clean Partnership. The evaluation found that the Keep it Clean Partnership was comprehensive, cost-effective, efficient, and well-organized. There were a number of recommendations that came out of the report and include the following:

- ◆ PACE business outreach is cost-effective and should be continued.
- ◆ Outreach look should be better coordinated to avoid potential consumer confusion and strengthen branding of message. Specific suggestions include:
 - Develop graphic guidelines for all programs, including the Partner and administrative material.
 - Change website address so it reflects the brand.
 - Better target audiences in Partner communities.
 - Coordinate look of PACE and general outreach materials.
- ◆ Evaluate the benefit/cost of subsidizing erosion control trainings for the private sector.
- ◆ Focus on permit compliance concerns that were identified at construction sites and municipal yards in two communities.
- ◆ Link various municipal water quality concerns with the general Keep it Clean outreach message (for example drinking water, and wastewater).
- ◆ Involve planners in post-construction "life cycle".
- ◆ Evaluate if outreach can be expanded to retail, residential, and adult target audiences.
- ◆ Increase enforcement of construction site erosion control and illegal discharge regulations.
- ◆ Streamline the web-based illegal discharge reporting structure.
- ◆ Increase ownership among municipal employees for good housekeeping activities.
- ◆ Evaluate expanding programs to focus more on addressing specific pollutants.

Permit Planning for 2008-2012

The Phase II stormwater discharge permit for the Partners will expire at the end of 2007. The Partners must reapply in order to be covered under the state's general discharge permit for the second permit term in September 2007. The second permit term will cover five years, from January 2008 to December 2012.

To prepare for the second permit term, the Partners met to discuss changes to programs based in the recommendations, which came out of the 2006 program evaluation. In addition, the Partners

hosted a panel discussion of water quality issues. The purpose of the meeting was to discuss what water quality issues the Partners should focus on during the next permit term.

Twenty-five experts from various federal, state, and local agencies and from private environmental firms attended. The result of the meeting was the development of a list of water quality impacts, including:

- Sediment
- Hydrologic Modification
- Microbial Pathogens
- Nutrients (fertilizers/pesticides)
- Metals
- Polycyclic aromatic hydrocarbons (PAHs)

These water quality concerns will be incorporated into the 2008-2012 Keep it Clean Plan and in the second permit term application, where appropriate.

In addition to initiating the updated Keep it Clean Plan, the 2009-2012 IGA was drafted and sent to each Partner community for review. It is expected that the new IGA will be signed in the spring of 2007.

Community Outreach and School Education Programs

Keep it Clean Partners contract with the City of Boulder's Education Program to implement the community outreach and school education programs. The follow are highlights:

- ◆ Distributed 69,449 Keep it Clean brochures and inserts.
- ◆ Distributed 26,350 campaign materials as take-home components to the *Get to Know Your H₂O* School and Community Education programs; 550 sticky note pads; 4,160 magnets; 7,430 tattoos; and 12,000 stickers and 2,210 *Adventures of H₂O Jo and Flo* activity books.
- ◆ Conducted 216 stormwater education programs reaching a total of 3,808 Boulder Valley School District (BVSD) and St. Vrain Valley School District (SVVSD) students.
- ◆ Marked 652 storm drains with the message, "Dispose no Waste, Drains to Creek".
- ◆ Distributed 2,108 fish door hangers as part of the storm drain marking program.
- ◆ 367,800 cars travel past the 'Keep it Clean' tributary signs each day.
- ◆ Attended several special events and reached 6,166 citizens.
- ◆ Revamped the Keep it Clean website: www.KeepitCleanPartnership.org, which had 36,000 visits.
- ◆ Reached 58 residents through the neighborhood program.
- ◆ Distributed 234 six-minute videos of H₂O Jo falling from the sky and encountering urban pollution sources during his journey down a street to the storm drain.
- ◆ Appeared as the H₂O Jo mascot at 12 community events in the Keep it Clean communities and an additional 19 events throughout the state of Colorado.

Stormwater Pollution Prevention Programs for Private and Public Sectors

The Keep it Clean Partnership contracted with Boulder County Public Health's Partners for a Clean Environment (PACE) Program to implement the following work items:

- ◆ Conducted sites visits to 209 restaurants and 105 commercial vehicle service facilities.
- ◆ Provided stormwater pollution prevention training to 150 municipal employees.
- ◆ Certified 32 out of 42 of Tier 1 municipal facilities.
- ◆ Visited 49 Tier 1 and Tier 2 municipal facilities.

Erosion Control, Permanent Water Quality Structures, and Illegal Discharge Prevention

Keep it Clean Partners spent a significant amount of time working within their individual communities to begin implementation of the regulatory mechanisms needed to manage illegal discharges and construction and post-construction stormwater runoff, and included the following tasks:

- ◆ Certified over 129 participants in construction erosion control training.
- ◆ Trained 150 municipal employees in illegal discharge identification.
- ◆ Entered data into a shared database for illegal discharge tracking.
- ◆ Responded to 186 illegal discharges.

Grants

The City of Boulder, with support from the Keep it Clean Partnership, applied for a grant from the Environmental Protection Agency (EPA) to:

- ◆ Establish the relative contribution of the municipal storm drainage discharges to the E. coli contamination of Boulder Creek.
- ◆ Identify the environmental conditions that enrich sources and sinks in order to develop management approaches to control microbial contamination.
- ◆ Evaluate sources of contamination due to human and non-human sources.

Budget

In 2006, the Keep it Clean budget was \$367,172, of which \$38,000 (10.4%) was proportionately reimbursed to each of the Partners. The majority of the reimbursement represents unspent contingency funds. The Keep it Clean IGA requires that 10% of the annual program budget be kept in contingency.

Future

In 2007, the Keep it Clean Plan programs will continue to be implemented to fulfill regulatory compliance with each Partners' stormwater discharge permit for 2007 and to meet community water quality goals.

The Keep it Clean Partnership will continue to react to the evaluation of the Keep it Clean Plan conducted in 2006 and identify specific water quality concerns to which programs and measurable goals will be assigned in preparation for applying for the next CPDHE stormwater permit.

In 2007, each Partner will be responsible for:

Implementing the individual ordinances adopted in 2004 and related procedures, such as:

- Reviewing and tracking erosion control plans and proposed permanent water quality structures.
- Conducting and tracking construction and post-construction site inspections.
- Responding, enforcing, and tracking all illegal discharges.
- Maintaining storm drainage outfall maps.
- Ensuring municipal operations are in compliance with stormwater regulations.
- Participating in the development of the 2008-2012 Keep it Clean Plan.

2006 Activities

MINIMUM CONTROL MEASURES

The following is a comprehensive summary
of
Priority One and Priority Two activities
implemented under the Keep it Clean Plan for each of the
Six Minimum Control Measures (MCMs)

MCM 1 - Public Education and Outreach

Regulatory Requirement

To satisfy the regulatory requirements for this minimum control measure (MCM), the following is required: (A) *Public education and outreach on stormwater impacts. The permittee must implement a public education program to include the following:*

- (I) *Distribute educational materials to the community or conduct equivalent outreach activities about the impacts of stormwater discharges on water bodies and the steps that the public can take to reduce pollutants in stormwater runoff; and*
- (II) *Inform businesses and the general public of impacts associated with illegal discharges and improper disposal of waste.*

Program Objective

Getting the Word Out - Public Education - Individuals play a key role in reducing stormwater impacts in their day-to-day activities. To successfully achieve water quality goals, a public education program must first educate the public on the extent and nature of the problems associated with urban runoff.

Next, the public must be instructed on what they can do to help solve the problem, and finally, a successful program must provide opportunities for hands-on activities.

The Keep it Clean Education Program uses a variety of methods to “get the word out.” The program is an expansion of the City of Boulder’s award-winning stormwater public outreach program.

Program Implementation

The Keep it Clean Partners contracted with the City of Boulder to provide the Keep it Clean Education Programs, which includes activities required under MCM 1 and MCM 2 for all Keep it Clean Partner communities. The Keep it Clean education staff, with direction from the Keep it Clean Education Workgroup and input from PACE staff, implemented programs outlined in the Keep it Clean Plan. Individual Partners were responsible for certain program elements, including the continued distribution of brochures and directing their citizens to the Keep it Clean website. The entire City of Boulder’s Stormwater Education Program’s annual report is available at www.KeepitCleanPartnership.org. The following is a summary of that report.

2006 Accomplishments

PRIORITY ONE ACTIVITIES

Brochures or Fact Sheets

2006 Measurable Goal outlined in the Keep it Clean Plan states - Brochures and fact sheets will be developed for targeted activities, as necessary.

The *After the Storm* brochure was created in 2003 and included information on the impacts of illegal discharges and other water quality issues. In 2004, the brochure was translated into Spanish. In 2005, the brochure was revised to include Keep it Clean campaign images, and the amount of text was reduced.

Distribution of the *Keep it Clean* general residential brochure continued in 2006, and the brochure was translated into Spanish and printed for Spanish-speaking audiences. A total of 16,749 Spanish and English language brochures were distributed in 2006 throughout Keep it Clean Partnership communities at school, community, business outreach, and residential direct

mail programs. In addition, the Keep it Clean Partnership partnered with Boulder County Ecocycle; the Boulder Energy Brigade; and the cities of Boulder, Erie, and Louisville to produce and distribute a one-page flyer for distribution to the public. Through this project, the Keep it Clean Partnership distributed 18,000 *Keep it Clean* flyers to the public. The City of Boulder produced a 2/3-page version of the *Keep it Clean* brochure for inclusion in utility bill inserts. This brochure featured information in both Spanish and English and was mailed to 30,000 Boulder residents. In total, the Keep it Clean Partnership distributed 69,449 brochures and flyers in 2006.

The permit requires that each Keep it Clean Partner is responsible for distributing brochures equal to approximately the number of households in their community over the five-year permit term. A summary of distribution methods follows:

Partner	Distribution means	Number of households	2003	2004	2005	2006	% of total households
Boulder County	Community and school events, and Ecocycle insert	8,900	0	7,700	38,906	4,873	579
Boulder	Utility bill insert, community and school events	39,596	37,000	27,833	31,513*	50,076	370
Longmont	Independent mailings, Ecocycle Insert, community and school events	26,667	21,500	850	8,162	2,101	123
Louisville	Utility bill insert, community and school events	7,216	8,100	14	916	6,450	215
Superior	Newsletter insert, community and school events	4,500	4,800	0	532	459	133
Erie	Utility bill insert, community and school events	3,750	3,750	250	5,900	7,591	341
TOTAL		90,629	75,150	36,647	85,929	69,449	294

* The City of Boulder produced the 'H2oooh!' stormwater brochure as part of the continued "Keep it clean, 'cause we're all downstream!" campaign in 2004. This brochure was distributed again in 2005, along with the new 'Keep it Clean' brochure, which was used in the city's 2005 utility bill insert.

In addition to brochures, stormwater and water protection information is also distributed via e-mail list serves. For example, in partnership with the PACE Program, stormwater and water pollution prevention information was sent via e-mail to all Boulder County and City of Boulder employees in September 2006.

Water Quality Curriculum

2006 Measurable Goal outlined in the Keep it Clean Plan states – Water quality curriculum will continue to be distributed to Boulder Valley School District and St. Vrain Valley School District.

In 2005, the Watershed Resource Guide was updated to include the most current and useful information for both the Boulder Creek and St. Vrain Creek Watersheds.

In 2006, the curriculum was again distributed through the annual Watershed teacher training sessions. All Boulder Valley School District (BVSD) and St. Vrain Valley School District (SVVSD) K-5th grade teachers and 6th-12th grade science teachers were invited to attend a free two-day training. In August, 18 educators attended the training.

It is estimated that the educators who attended the 2006 training will reach over 1,430 students in the 2006-2007 school year.

Other Keep it Clean education and outreach activities included:

- ◆ Promoting the Get to Know your H₂O Education Program.
- ◆ Conducting 216 stormwater education programs, reaching a total of 3,808 students.
- ◆ 14 teachers checking out equipment to conduct classroom programs; reaching 611 students.
- ◆ 150 students participating in the Rain Rain water pollution prevention program.
- ◆ Partnering with the *Daily Camera* newspaper for the second time to create the “Get to Know Your H₂O” educational insert. The 16-page insert featured H₂O Jo and Flo and a series of water protection and conservation activities. Approximately 2,000 papers were requested by teachers for distribution in 48 schools in the 2 school districts, and the remaining 1,000 papers have been and continue to be distributed to groups through the Keep it Clean Education Program.
- ◆ Appearing as the H₂O Jo mascot at 12 community events in the Keep it Clean communities and an additional 19 events throughout the state of Colorado.
- ◆ Distributing campaign materials, including: 550 sticky note pads, 4,160 magnets, 7,430 tattoos, 12,000 stickers and 2,210 Adventures of H₂O Jo and Flo activity books.

Website

2006 Measurable Goal outlined in the Keep it Clean Plan states – Stormwater materials will continue to be developed for the website.

In 2005, the Keep it Clean website, hosted by the Boulder Area Sustainability Information Network (BASIN) was updated to include ‘Keep it Clean’ campaign graphics and general information on the Keep it Clean Partnership.

In December 2006, the website address was changed from www.BASIN.org/WASH to www.KeepitCleanPartnership.org to better reflect its relationship to the Keep it Clean campaign. The website is updated frequently to include the most current Keep it Clean Partnership information. The Keep it Clean monthly website visits increased in 2006.

Year	Average Monthly Requests	Average Monthly Distinct Hosts Served
2004	1,587	703
2005	3,363	859
2006	3,029	1,543

All Keep it Clean Partners list the Keep it Clean website on their own communities' websites, which include:

- ◆ **Boulder County:** <http://www.bouldercountywater.org/>
- ◆ **Boulder:** www.boulderutilities.net
- ◆ **Longmont:** <http://www.ci.longmont.co.us>
- ◆ **Louisville:** <http://www.ci.louisville.co.us>
- ◆ **Superior:** www.townofsuperior.com
- ◆ **Erie:** <http://www.ci.erie.co.us/>

PRIORITY TWO ACTIVITIES

Children's Water Festival

2006 Measurable Goal outlined in the Keep it Clean Plan states – Continue hosting Children's Water Festival for Boulder Valley School District (BVSD) and St. Vrain Valley School District (SVVSD) students.

H₂O Jo and Flo reappeared in 2006 as hosts for the BVSD and SVVSD water festivals. Their message, "Keep it clean, 'cause we're all downstream!" was the theme.

Approximately 960 BVSD 5th grade students and their teachers from 39 classrooms in 18 BVSD schools attended the 14th annual Children's Water Festival held at the University of Colorado (CU) campus on May 16, 2006. Sponsors included the Northern Colorado Conservancy District, CU's Office of Community Relations, the U.S. Bureau of Reclamation, and Wild Oats Markets. Press coverage included a front-page photo and short write-up, which appeared in the *Daily Camera* on May 10, 2006.

Approximately 758 SVVSD 5th grade students and their teachers from 36 classrooms in 10 SVVSD schools attended the Longmont's Children's Water Festival held at the Raintree Conference Center in Longmont on May 22, 2006.

This year marked the inception of a new and improved Level II/Ambassador Program, thanks to a generous donation from the City of Boulder Stormwater Program. The City of Boulder and Keep it Clean Partnership staff worked with Environmental Communications Associates and local teachers to create the Water Festival materials for 5th graders. The materials focus on fundamental water awareness, conservation, pollution, and flooding. The new program, Operation Water Festival, includes a complete teacher's packet featuring teacher's guides, student worksheets, and flash cards on each water topic. Colorful stickers and certificates were given as study and performance measures. All of these elements were presented in a contemporary, undercover secret agent theme.

A key benefit of the Operation Water Festival materials is the take-home Water Agent book. This book features homework assignments for each activity. Students are encouraged to work with family members to complete the assignments. As a result, parents and siblings learn about water protection and conservation.

Over 64% of BVSD classes and 100% of SVVSD classes attending the Children's Water Festival participated in the Water Ambassador Program.

Tributary Signage

2004 Measurable Goal outlined in the Keep it Clean Plan states – Tributary signage will be designed, produced, and installed along major intersections in the county and in municipalities marking significant waterways.

The tributary signs are intended to increase public awareness of local water resources. The sign caption reads, “Keep it clean, ‘cause we’re all downstream!” and includes the local creek name. The tributary signs were designed in 2003. In 2004, 60 tributary signs were produced and installed along major intersections in Boulder County and in Keep it Clean communities marking significant waterways.

In 2006, the City of Boulder added 16 more signs. In total, over 367,800 cars travel past these signs each day.

Number of daily vehicles traveled (DVT) for streets where tributary signs are installed.	Boulder	Boulder County	Erie	Louisville	Longmont	Superior
	174,959	34,750	4,700	22,431	94,600	36,400

Alternative Information

2006 Measurable Goal outlined in the Keep it Clean Plan states – Specific campaigns to target various pollutant sources will be developed.

The website was updated to reflect the Keep it Clean campaign materials.

Program Element Changes

None

Budget

Proposed: \$108,359

Actual: \$104,098

Unexpended funds: \$4,261

Savings are due primarily to unexpended labor.

Members of Workgroup

Wendi Palmer, Town of Erie

Donna Scott, City of Boulder

MCM 2 - Public Involvement and Participation

Regulatory Requirement

To satisfy the regulatory requirements for this minimum control measure, the following is required:

(B) Public involvement/participation. The permittee must, at a minimum, comply with State and local public notice requirements when implementing the stormwater management programs required under this permit. Notice of all public hearings should be published in a community publication or newspaper of general circulation, to provide opportunities for public involvement that reach a majority of citizens through the notification process.

Program Objective

Promoting Public Participation - To ensure buy-in and support from the public, participation is critical. This includes providing information and seeking public input on stormwater management issues.

The Keep it Clean programs include participatory programs, such as neighborhood storm drain stenciling, illegal discharge reporting, and annual public meetings.

2006 Accomplishments

Keep it Clean Education Program

The Keep it Clean Partnership contracted with the City of Boulder to develop programs for MCM 2, which included the annual public meeting presentation and the storm drain stenciling program.

Individual Keep it Clean Partners are responsible for scheduling and hosting an annual public meeting in each of their communities. In 2006, the annual meetings took place during special events in each of the Partner communities. The City of Boulder supplied an event booth and staff for each event. In addition, staff from each of the Keep it Clean Partners attended to answer questions and hand out materials.

Each year, Keep it Clean Partners are responsible for ensuring that a minimum of 5% of the storm drains are stenciled or marked in their communities. The City of Boulder supplies the materials for this activity.

PRIORITY ONE ACTIVITIES

Annual Public Meetings

2006 Measurable Goal outlined in the Keep it Clean Plan states – Annual public meetings will continue.

In 2003, each Keep it Clean Partner hosted a public meeting to solicit input on Keep it Clean programs, but only a handful of citizens attended these meetings. To increase participation, Keep it Clean Partners requested and received approval to change this measurable goal to include an alternative annual meeting that included participation at a local community festival or special event for each Keep it Clean Partner.

Utilizing graphics and messages created for the 'Keep it Clean' water quality campaign, a special events outreach booth was developed. The booth includes hands-on, portable, engaging activities that serve as tools for community members to learn about non-point source pollution and recognize how their behaviors can affect water quality. The booth reached 6,166 individuals at at least one large-scale community event in each Keep it Clean community (see table below) in 2006.

In addition to the outreach booth, the Keep it Clean Partnership provided a non-point source maze and give-away materials to Boulder County for use at the 2006 Boulder County Fair. The Keep it Clean Partnership had a presence at several other events.

The Keep it Clean communities' festivals or special events included the following:

Partner	Date of Event	Event	Number of Visitors
Boulder County	September 14, 2006	Niwot's Farmer's Market	55
	July 27-31, 2006	Boulder County Fair	1,000
Boulder	May 20, 2006	Community Clean-up Day	400
	June –October, 2006	Boulder's Farmer's Market	1,000
	August 2006	CU RA Resource Fair	170
	October 1, 2006	Fall Festival	350
	December 4, 2006	Lights of December Parade	2,000
Longmont	July 8, 2006	Rhythm on the River	250
Louisville	June 10, 2006	Taste of Louisville	297
Superior	September 9, 2006	Chili Cook-off	165
Erie	May 20, 2006	Erie Town Fair	479
Total			6,166

Storm Drain Stenciling Program

2006 Measurable Goal outlined in the Keep it Clean Plan states – Storm drain stenciling program will continue to be initiated. A minimum of 5% of the storm drains will be stenciled per year.

In 2006, Keep it Clean education staff provided stormwater education programs and facilitated storm drain stenciling activities with over 215 youth and citizens in Keep it Clean communities. Keep it Clean education staff continued to use curb markers and spray-painted stencils marking 652 storm drains. The Storm Drain Marking Program volunteers distributed 2,108 fish door hangers as part of the marking program in neighborhoods in 2006. The brightly colored, fish-shaped door hangers, available in both English and Spanish, were distributed to property owners in the same block that the storm drains were marked. The door hangers included information about the storm drain marking program and provide tips on ways to protect and conserve local waters. The door hanger also lists the www.KeepitCleanPartnership.org website and the Keep it Clean spill hotline (303-441-4444).

The 5% minimum requirement for stenciling storm drains was met by all of the Partners in 2006. The following table summarizes this activity:

Partner	Total Number of Storm Drains	Stenciled in 2003	Stenciled in 2004	Stenciled in 2005	Stenciled in 2006	Percent of Total Stenciled in 2006	Percent of Total Storm Drains Stenciled
Boulder County	225	82	40	31	23	10.2 %	78 %
Boulder	4,180	209	439	402	264	6.3 %	31 %
Longmont	1,820	99	95	115	170	9.3 %	26 %
Louisville	600	43	137	31	31	5.2 %	40 %
Superior	300	22	20	74	20	6.7 %	45 %
Erie	320	62	17	162	144	45 %	120 %
Total	7,445	517	748	815	652	8.7 %	37 %

PRIORITY TWO ACTIVITIES

Speakers Program

2006 Measurable Goal outlined in the Keep it Clean Plan states – Speakers Program will be continued.

The Speakers Program includes a list of speakers available to present water quality information at local events. A program overview, the three presentation options, and a list of speakers are available at www.KeepitCleanPartnership.org. In 2006, WASH staff provided 3 presentations and reached 111 people:

Date	Group	Number of Participants	Location	Program Topic
2/28/06	CU Boulder Earth Education Class	11	Boulder	Get to Know your H2O (virtual tour) and sharing educational resources
10/17/06	CU Williams Village Leadership Group	50	Boulder	Water Conservation/Protection
11/9/06	CU Williams Village Leadership Group	50	Boulder	Water Conservation/Protection

In addition to the Speaker's Program, Keep it Clean staff made presentations two Colorado events, reaching nearly 190 people:

Date	Event	Number of Participants	Program Title
2/1/06	Boulder Flycasters Youth Night	40	Basic outreach table with water information and give-aways
2/15/06	Booth at Big Thompson Watershed Forum Annual Meeting	150	Education/Outreach Booth featuring 'Keep it Clean' campaign

StreamTeam

2005 Measurable Goal outlined in the Keep it Clean Plan states – Stream Teams will be initiated.

Keep it Clean staff put together resources for the StreamTeam Program and promoted the program to teachers at the August teacher workshop. In addition to teacher and classroom participation, community groups were contacted about the program.

StreamTeam Program participants have the following equipment available for loan through the Keep it Clean Education Program.

- ◆ Water Quality Testing Equipment (LaMotte and Chemetrics)
- ◆ Creek Cleanup Kits
- ◆ Storm Drain Marking and Stenciling Kits

A number of community volunteers (including school groups) participated in the StreamTeam Program in 2006.

In 2006, the Keep it Clean Partnership Education staff revisited the StreamTeam structure and participation requirements and identified a need to develop more comprehensive plans to ensure StreamTeam success. Staff met three times with Boulder, Boulder Creek Watershed Initiative, and United States Geological Survey (USGS) staff in November and December 2005 and in 2006. Working as a team, this group continues to meet to develop final plans for the StreamTeam monitoring component.

Staff chose to pilot the River Watch Program in one SVVSD school and one BVSD school in 2006. Silver Creek High School students completed monthly River Watch sampling on Dry Creek 1 in Longmont, while the Boulder Home School group completed monthly sampling on South Boulder Creek in Boulder. Due to staff requirements and the need for at least several two-hour blocks to complete the water quality sampling and tests, the Keep it Clean Partnership will not sponsor River Watch groups in 2007. We will, however, continue to promote the program to schools that are willing to devote the consistent time and energy needed to complete this program successfully.

GRANTS

The Keep it Clean Education Program continued work on two grants from the State of Colorado Non-point Source Program.

‘Keep It Clean’ Neighborhood Watershed Stewardship Program

The Keep It Clean Partnership with the City of Boulder received a \$25,000 grant to pilot the ‘Keep it Clean’ Neighborhood Water Stewardship Program (NWSP), which is a neighborhood-based non-point source behavior change and outreach program. The project goal is to engage Keep it Clean community residents in water protection activities that help them take the necessary actions to reduce non-point source pollution in their community. To accomplish this goal, the ‘Keep it Clean’ NWSP includes three main components:

- ◆ *Implement the Empowerment Institute Livable Neighborhood Water Stewardship Program to encourage residential behavior changes:* Keep it Clean Partnership and City of Boulder education staff were trained in October 2005 to implement this pilot program in each Keep it Clean community. In 2006, neighborhood teams consisting of 58 people learned about NPS issues and completed at least 5 water protection actions.
- ◆ *Measurable Results:* Program water quality action logs and surveys are used to gain quantifiable feedback on the behaviors taken and the environmental impacts.
- ◆ *Statewide Transferability:* In an effort to encourage statewide program implementation, the Keep it Clean Partnership will develop and deliver a project summary presentation for Colorado communities.

A final report will be submitted to the Colorado Department of Public Health and Environment in February 2007.

A Ride Through the Storm Drain: The Adventures of H₂O Jo

The Keep it Clean Partnership received \$3,450 in NPS Outreach Mini Grant funding to produce a six-minute video of H₂O Jo falling from the sky and encountering urban pollution sources during his journey down a street to the storm drain, and ultimately to a creek. The script was based on an existing video from Salt Lake City, Utah. The total required funding was \$10,500, of which the Keep it Clean Partnership and 18 Colorado communities contributed the remainder.

As a result of the grant and coordinated efforts among project participants, 234 copies of the video were distributed to educational institutions and 25 communities in Colorado. The video is also featured on the npscolorado.com and KeepitCleanPartnership.org.

Program Element Changes

None

Budget

Proposed: \$20,466

Actual: \$15,962

Unexpended funds: \$4,504

Savings are due primarily to unexpended labor.

Members of Workgroup

Wendi Palmer, Town of Erie

Denise Grimm, Boulder County

Donna Scott, City of Boulder

MCM 3 - Illegal Discharge Detection and Elimination

Regulatory Requirement

To satisfy the regulatory requirements for this minimum control measure, the following is required:

(C) *The permittee must develop, implement and enforce a program to detect and eliminate illegal discharges (as defined at 61.2) into the permittee's MS4. The permittee must:*

- (a) *Develop, if not already completed, a storm sewer system map, showing the location of all municipal storm sewer outfalls and the names and location of all state waters that receive discharges from those outfalls;*
- (b) *To the extent allowable under State or local law, effectively prohibit, through ordinance or other regulatory mechanism, non-stormwater discharges into the storm sewer system, and implement appropriate enforcement procedures and actions; and*
- (c) *Develop and implement a plan to detect and address non-stormwater discharges, including illegal discharges and illegal dumping, to the system. The plan must include the following three components: procedures for locating priority areas likely to have illegal discharges; procedures for tracing the source of an illegal discharge; and procedures for removing the source of the discharge.*

Program Objective

Detecting and Eliminating Improper or Illegal Connections and Discharges - A cost-effective way to reduce some of the worst stormwater pollutants is to identify and eliminate illegal connections and discharges.

The Keep it Clean Plan includes public and municipal employee education training, spill response, and regulatory language to control illegal discharges. In addition, public information material will discuss the impacts of spills on water quality and a hotline for reporting illegal discharges will be advertised.

2006 Accomplishments

PRIORITY ONE ACTIVITIES

All Keep it Clean Partners have illegal discharge ordinances and enforcement response plans in place. The following table includes web links to the Partners' ordinances.

Partner	Ordinance Adopted	Web link
Boulder County	September 13, 2005	http://www.co.boulder.co.us/bocc/Ordinances/illicit%20stormwater%20discharge.htm
Boulder	December 6, 2004	http://www.bouldercolorado.gov/index2.php?option=com_content&task=view&id=1563&Itemid=599
Longmont	January 12, 2005	http://bpc.iserver.net/codes/longmont/index.htm Chapter 14.26 Stormwater Illicit Discharges and Permit Requirements
Louisville	December 21, 2004	http://www.ci.louisville.co.us/cityclerk/municode.htm Title 13, water/sewer, chapter 13.36
Superior	December 13, 2004	http://www.colocode.com/superior.html Chapter 11, Article IV
Erie	November 9, 2004	http://66.113.195/CO/Erie/index.htm

Municipal Separate Storm Sewer System (MS4) Mapping

2006 Measurable Goal outlined in the Keep it Clean Plan states - MS4 system mapping updated.

Each Keep it Clean Partner community, as required, has completed a storm sewer map. The maps show the locations of municipal storm sewer outfalls and the names and locations of state waters that receive discharges from these outfalls. These maps are routinely updated.

Illicit Discharge Hotline

2006 Measurable Goal outlined in the Keep it Clean Plan states - Illicit Discharge hotline and database implemented.

In 2003, Boulder County's Emergency Communications Division agreed to the use and publication of a "Spill Hotline" (303-441-4444) to be shared by all Keep it Clean Partners. Calls to the Spill Hotline are received by the Boulder County Communications Center and are dispatched to the appropriate response agency and/or jurisdiction.

In addition to the Spill Hotline, the Keep it Clean Partners share an illegal discharge incident database, hosted on the BASIN website. The Boulder County Environmental Emergency Response Team (EERT), which responds to hazardous material and other spills, posts its data on the BASIN database as well.

Partner	Number of Responses*	Enforcement Actions
Boulder County	9+0+2	5 verbal
Boulder	26 + 120 +51	10 verbal, 57 written warnings, 3 NOV
Longmont	6+31+28	11 verbal, 2 written warnings, 15 NOV
Louisville	2 + 8 +0	1 NOV
Erie	0+0+2	2 verbal
Superior	2+0+0	2 verbal

* The first number is from the BASIN database; the second number is either fire department responses or individual tracking; third number is regarding public reporting on construction sites. NOV = Notice of violation.

Business Education Program

2006 Measurable Goal outlined in the Keep it Clean Plan states – Business Education Program component development completed and implementation continued.

The Keep it Clean Partners contracted with the Boulder County Partners for a Clean Environment (PACE) Program to provide stormwater pollution prevention education and materials to businesses operating in the Keep it Clean communities. Major work elements performed by PACE in 2006 for the Keep it Clean Partnership are outlined below. For more details, the complete PACE Annual Report is available online at www.pacepartners.com.

About PACE

PACE offers a pollution prevention certification program to various business sectors. PACE services are free-of-charge to interested businesses. For the Keep it Clean Partnership, PACE used a two-pronged approach to provide additional services to the Keep it Clean Partners. For Program A, PACE targets business sectors already included in the PACE certification program. For these businesses, PACE expanded its existing certification program to include stormwater

pollution prevention information. PACE’s Program B provides outreach materials to those targeted businesses not already included in the PACE certification program.

Program A: PACE Certification

PACE expanded its existing program to include commercial sectors identified as potentially significant contributors of pollutants to the storm drain system. Program A sectors include vehicle repair, auto body, restaurant, and retail businesses.

In 2006, PACE completed the following activities for PACE Program A businesses:

- ◆ Conducted site visits, which provided one-on-one technical assistance to educate businesses, identify stormwater impacts, and identify low-cost solutions.
- ◆ Reviewed stormwater criteria for business sectors.
- ◆ Certified 14 new and re-certified 103.
- ◆ Provided compliance assistance to approximately 78% of all businesses.
- ◆ Contacted 10 retail businesses about retail certification, which includes a stormwater component.
- ◆ Distributed 200 restaurant and 500 facility brochures.

2006 PACE activity in each of the Keep it Clean Partner communities

Jurisdiction	Contacts per Contract	Vehicle Contacts	Restaurant Contacts	Total Actual Contacts
Boulder County	9	1	9	10
Boulder	154	77	87	164
Longmont	90	19	79	98
Louisville	28	5	27	32
Erie	3	0	3	3
Superior	4	3	4	7
Total Area	289	105	209	314

Total to date PACE activities in each Keep it Clean Partner community

Jurisdiction	Vehicle Repair		Restaurants	
	Total Businesses	Site Visits to date	Total Businesses	Site Visits to date
Boulder County	9	2	18	25
Boulder	131	142	268	173
Longmont	91	40	188	174
Louisville	7	11	67	35
Erie	4	2	10	6
Superior	1	4	13	12
Total Area	236	201	564	425

Program B: PACE Business Outreach

PACE developed Program B to provide stormwater outreach to businesses that are not currently included in PACE's existing certification program. These business sectors included commercial building maintenance, facility managers, pressure washers, private golf courses, do-it-yourself auto parts stores, and equipment rental stores.

Outreach to these Program B businesses sectors in 2006 included:

- ◆ Conducted 3 pressure washing wash water collection demonstrations with a portable dam and wet/dry vacuum to demonstrate proper power washing and wastewater collection techniques.
- ◆ Invited 400 facility managers to 3 training sessions. Conducted a facility manager training session for 5 managers and then retooled to provide one-on-one training for 7 businesses comprised of 30 employees.
- ◆ Distributed outreach materials to 5 do-it-yourself automobile maintenance shops and 3 rental shops.

2007 PACE Goals

In 2007, PACE plans to continue site visits to provide *Program A: PACE Business Certification* to vehicle repair, auto body, restaurant, and retail businesses in the Keep it Clean Partnership area. The objective is to identify and conduct one site visit to all vehicle repair, auto body, and restaurants by the end of the permit term in 2007.

For *Program B: PACE Business Outreach*, the following activities are planned for 2007:

- ◆ PACE will conduct one-on-one trainings with ten (10) facility maintenance organizations.
- ◆ Develop a web-based training and certification for mobile cleaners (dependent on finalization of State rulings).
- ◆ Develop new outreach approach to encourage do-it-yourself and rental stores to implement proper stormwater practices and stock pollution prevention materials and equipment for their customers.
- ◆ Continue Keep it Clean/PACE site visits to provide stormwater education and Keep it Clean certification for the vehicle repair, auto body, restaurant, and retail businesses in the Keep it Clean Partnership area.
- ◆ Provide in-depth guidance to businesses in need of specific stormwater compliance assistance.
- ◆ Work with Keep it Clean education specialist to "co-brand" outreach materials.
- ◆ Participate in the development of the 2008-2012 Keep it Clean Plan.

Illicit Discharge Detection Plan

2006 Measurable Goal outlined in the Keep it Clean Plan states – Illicit Discharge Detection Plan implementation continued by 12/31/06.

All Partners have completed and are implementing the Illicit Discharge Detection and Elimination (IDDE) Plans. IDDE training is a component of the municipal training offer by the PACE Program.

In addition, the Keep it Clean Partnership has developed door hangers. The door hanger was developed to notify potential illegal discharge violators. The door hanger outlined the possible violations and solutions and serves as a warning of potential fines.

The 'car card' is for city/county employees to be kept in fleet vehicles. These car cards act as a ready reference and include a summary of prohibited discharges and spill response agency information. The car card will be revamped and reprinted in 2007.

PRIORITY TWO ACTIVITIES

Household Hazardous Waste (HHW) Disposal Program

2006 Measurable Goal outlined in the Keep it Clean Plan states – Support of countywide HHW Disposal Program will continue.

All of the Keep it Clean Partners signed a five-year intergovernmental agreement to participate in the County-wide Household Hazardous Waste Program.

Program Element Changes

None

Budget

Proposed: \$57,321

Actual: \$56,083

Unexpended funds: \$1,238

Savings are due to not expending all funds allocated for illegal discharge incident tracking.

Members of Workgroup

Ken Mason, City of Louisville

Cal Youngberg, City of Longmont

Donna Scott, City of Boulder

MCM 4 - Construction Site Stormwater Runoff Control

Regulatory Requirement

To satisfy the regulatory requirements for this minimum control measure, the following is required:

(D) *Construction site stormwater runoff control.*

(I) *The permittee must develop, implement, and enforce a program to reduce pollutants in any stormwater runoff to the MS4 from construction activities that result in a land disturbance of greater than or equal to one acre. Reduction of pollutants in stormwater discharges from construction activity disturbing less than one acre must be included in the program if that construction activity is part of a larger common plan of development or sale that would disturb one acre or more. If the Division waives requirements for stormwater discharges associated with a small construction activity in accordance with 61.3(2)(f)(ii)(B), the permittee is not required to develop, implement, and/or enforce its program to reduce pollutant discharges from such a site.*

(II) *The program must be developed and implemented to assure adequate design, implementation, and maintenance of BMPs at construction sites within the MS4 to reduce pollutant discharges and protect water quality. The program must include the development and implementation of, at a minimum:*

- (a) *An ordinance or other regulatory mechanism to require erosion and sediment controls, as well as sanctions to ensure compliance, to the extent allowable under State or local law;*
- (b) *Requirements for construction site operators to implement appropriate erosion and sediment control BMPs;*
- (c) *Requirements for construction site operators to control waste, such as discarded building materials, concrete truck washout, chemicals, litter, and sanitary waste, at the construction site that may cause adverse impacts to water quality;*
- (d) *Procedures for site plan review which incorporate consideration of potential water quality impacts;*
- (e) *Procedures for receipt and consideration of information submitted by the public, and*
- (f) *Procedures for site inspection and enforcement of control measures.*

Program Objective

Controlling Construction Site Runoff - Effective construction site pollution prevention can dramatically reduce sediment loading to stream ecosystems. An effective erosion control program must include adequate ordinance language, effective inspection and enforcement, and appropriate development and construction standards.

The Keep it Clean Plan includes all of these components. In addition, the Keep it Clean Plan includes contractor training and a certification program. These program elements will ensure consistent countywide education and minimum standards.

2006 Accomplishments

PRIORITY ONE ACTIVITIES

The following table includes web links to the Partners' ordinances.

Partner	Ordinance Adopted	Web link
Boulder County	August 11, 2005	http://www.co.boulder.co.us/lu/lucode/amendments/DC0504final.pdf
Boulder	December 6, 2004	http://www.bouldercolorado.gov/index2.php?option=com_content&task=view&id=1563&itemid=599
Longmont	January 12, 2005	http://bpc.iserver.net/codes/longmont/index.htm Chapter 14.26 Stormwater Illicit Discharges and Permit Requirements
Louisville	December 21, 2004	http://www.ci.louisville.co.us/cityclerk/municode.htm Title 13, water/sewer, chapter 13.36
Superior	December 13, 2004	http://www.colocode.com/superior.html Chapter 11, Article IV
Erie	November 9, 2004	http://66.113.195/CO/Erie/index.htm

Erosion Control Standard Operating Procedures

2006 Measurable Goal outlined in the Keep it Clean Plan states - Individual communities implement enforcement procedures.

The Keep it Clean Partners are implementing enforcement procedures.

WASH Partner	Number of Active Construction Sites Over an Acre	Number of Inspections	Enforcement Actions
Boulder County	4	48	0
Boulder	9	Continuous	Multiple verbal warnings, no enforcement required.
Longmont	31	63	0
Louisville	11	61	6
Erie	12	Continuous	Multiple verbal warnings, no enforcement required
Superior	2	30	0

Training and Education for Construction Site Operators and Inspectors

2006 Measurable Goal outlined in the Keep it Clean Plan states – Implement Keep it Clean contractor training program.

The Keep it Clean Partnership has been implementing a training program for construction site operators and inspectors since 2003. Most of the Keep it Clean Partners require, by ordinance, that the individuals inspecting erosion control and sediment removal practices be certified by an acceptable program.

In 2006, 129 individuals from the private and public construction sector participated in the Keep it Clean Erosion Control Training Program.

Public Input

2006 Measurable Goal outlined in the Keep it Clean Plan states - Individual communities will develop public concerns tracking system.

The Keep it Clean Partners have developed individual tracking systems for public concerns.

Program Element Changes

None

Budget

Proposed: \$25,600

Actual: \$30,397

Overage: \$4,797

Overage due to increased erosion control trainings.

Members of Workgroup

Betty Solek, City of Boulder

Gary Bolken, City of Longmont

Ela Nelson, City of Longmont

Dennis Crock, Town of Erie

MCM 5 - Post-Construction Stormwater Management

Regulatory Requirement

To satisfy the regulatory requirements for this minimum control measure, the following is required:

(E) *Post-construction stormwater management in new development and redevelopment.*

(I) *The permittee must develop, implement, and enforce a program to address stormwater runoff from new development and redevelopment projects that disturb greater than or equal to one acre, including projects less than one acre that are part of a larger common plan of development or sale, that discharge into the small MS4. The program must ensure that controls are in place that would prevent or minimize water quality impacts.*

(II) *The permittee must:*

- (a) *Develop and implement strategies which include a combination of structural and/or non-structural BMPs appropriate for the community;*
- (b) *Use an ordinance or other regulatory mechanism to address post-construction runoff from new development and redevelopment projects to the extent allowable under State or local law; and*
- (c) *Ensure adequate long-term operation and maintenance of BMPs.*

Program Objective

Addressing Stormwater in New Development and Redevelopment. It is estimated that when a tributary drainage basin reaches 10–20 percent impervious, there are significant ecological stresses on the aquatic ecosystem. Therefore, the most important strategy for addressing stormwater is to focus on land use and development. One of the best strategies is to address the aggregate amount of new impervious surfaces and disconnecting impervious areas. Other strategies include implementing effective best management practices (BMPs) for the control and treatment of site runoff, such as stormwater detention or grass swales.

The Keep it Clean Plan for post-construction includes the development of programs and ordinances that address runoff from new development and redevelopment. The Keep it Clean Partnership will use a successful, existing program by adopting Urban Drainage and Flood Control District’s Best Management Practices Manual.

2006 Accomplishments

PRIORITY ONE ACTIVITIES

The following table includes web links to the Partners’ ordinances.

Partner	Ordinance Adopted	Web link
Boulder County	August 11, 2005	http://www.co.boulder.co.us/lu/lucode/amendments/DC0504final.pdf
Boulder	December 6, 2004	http://www.bouldercolorado.gov/index2.php?option=com_content&task=view&id=1563&itemid=599
Longmont	January 12, 2005	http://bpc.iserver.net/codes/longmont/index.htm Chapter 14.26 Stormwater Illicit Discharges and Permit Requirements
Louisville	December 21, 2004	http://www.ci.louisville.co.us/cityclerk/municode.htm Title 13, water/sewer, chapter 13.36
Superior	December 13, 2004	http://www.colocode.com/superior.html Chapter11, Article IV
Erie	November 9, 2004	http://66.113.195/CO/Erie/index.htm

Design Criteria and Standards

2006 Measurable Goal outlined in the Keep it Clean Plan states - Post-Construction ordinance references Urban Drainage and Flood Control District (UDFCD) Manual, Vol. 3. Individual communities implement monitoring and inspection procedures of construction of best management practices (BMPs) and post-construction maintenance.

All Partner ordinances have been adopted and monitoring and inspection procedures of permanent BMPs has begun.

WASH Partner	Number of Approved Post-Construction BMPs since Adoption of Ordinance	Number of Inspections of Post-Construction BMPs	Enforcement Actions	Comments
Boulder County	0	0	0	
Boulder	8	0	0	Inspect as part of active site Inventoried 739 existing
Longmont	11	0	0	
Louisville	1	1	0	
Erie	15	8	7 pending	Debris removal Install outlet structure Regrade bank
Superior	1	12	0	

Development Review

2006 Measurable Goal outlined in the Keep it Clean Plan states - Individual communities implement standard operating procedures (SOP)s for site plan review and inspection.

All Partners have approved SOPs for site plan review and inspection and are implementing them.

Program Element Changes

None

Budget

Proposed: \$6,150

Actual: \$6,288

Overage: \$138

Overage due to Project Coordinator's labor.

Members of Workgroup

Betty Solek, City of Boulder

Jim Stout, City of Boulder

Gary Bolken, City of Longmont

Ela Nelson, City of Longmont

Dennis Crock, Town of Erie

MCM 6 - Pollution Prevention and Good Housekeeping for Municipal Operations

Regulatory Requirement

To satisfy the regulatory requirements for this minimum control measure, the following is required:

(F) Pollution prevention/good housekeeping for municipal operations.

(I) The permittee must develop and implement an operation and maintenance program that includes an employee training component and has the ultimate goal of preventing or reducing pollutant runoff from municipal operations. The program must also inform public employees of impacts associated with illegal discharges and improper disposal of waste from municipal operations. The program must prevent and/or reduce stormwater pollution from facilities such as streets, roads, highways, municipal parking lots, maintenance and storage yards, fleet or maintenance shops with outdoor storage areas, salt/sand storage locations and snow disposal areas operated by the permittee, and waste transfer stations, and from activities such as park and open space maintenance, fleet and building maintenance, street maintenance, new construction of municipal facilities, and stormwater system maintenance, as applicable.

Program Objective

Implementing Pollution Prevention for Municipal Operations. A surprising number of municipal operations can affect water quality and quantity. These activities range from the storage and handling of harmful chemicals to the maintenance of municipal properties, vehicles, roads, and storm sewer systems. Activities such as integrated pest management, water conservation, recycling, and education programs can prove to be very effective in addressing these pollutant sources.

The Keep it Clean Partnership provides an education and certification program through the Boulder County Partners for a Clean Environment (PACE) Program for municipal operations.

2006 Accomplishments

PRIORITY ONE ACTIVITIES

Partners for a Clean Environment (PACE) Municipal Program

2006 Measurable Goal outlined in the Keep it Clean Plan states – Continue working toward certification of all Tier 1 facilities (vehicle, street, and storm drainage maintenance, and parks/golf courses). Continue training and outreach to all Tier 2 operations (facility maintenance, fire departments and waste transfer centers). Evaluate program and recommend changes.

The Keep it Clean Partners contracted with the Partners for a Clean Environment (PACE) Program to develop a certification program for municipal operations. The following outlines a summary of activities completed in 2006. The complete PACE Annual Report is available online at www.pacepartners.com.

Tier 1 Municipal Facility Certification

Tier 1 facilities are those facilities identified by PACE to have the highest impact on stormwater, including **fleet, street, and storm drainage maintenance, and parks/golf courses**.

In 2003 and 2004, PACE visited all Tier 1 facilities in each of the Keep it Clean Partner communities. These site visits provided one-on-one assistance to identify appropriate pollution prevention practices and identify areas for improvement. A “certification” program was developed to recognize the operations implementing pollution prevention or stormwater practices.

In 2005, the Tier 1 Facility Certification Program continued, conducting over 20 site visits. Facilities that had not yet fully implemented pollution prevention measures were asked to submit a certification plan. At the end of 2005, 55% of the Tier 1 facilities were certified.

At the end of 2006, 72% (32 out of 42) of Tier 1 facilities were certified. The majority of those still needing certification are facilities requiring significant funding for improvements. The following table outlines the status of certified Tier 1 Facilities in each of the Keep it Clean Partner communities.

PACE Certification: Tier 1 Municipal Facilities

Partner	Percent of Tier 1 Facilities Certified
Boulder County	55%
Boulder	86%
Longmont	0%
Louisville	100%
Superior	100%
Erie	100%

- ◆ Conducted 34 site visits to assist facilities with certification.
- ◆ Reviewed 6 certification plans and certified 4 operations.
- ◆ Provided “un-certified” facilities with follow-up site visits, calls and/or letters as well as guidance on certification.
- ◆ Developed certified/non-certified lists for each Keep it Clean Partner.
- ◆ Designed, printed, and distributed certificates to 4 facilities.
- ◆ Provided stormwater pollution prevention training to 95 employees at 4 *Stormwater 101* training sessions.
- ◆ Provided stormwater compliance assistance to 25 managers at 3 *Stormwater 103* training workshops.

Number of Tier 1 Site Visits per Partner

Type of Facility	Boulder	Boulder County	Longmont	Louisville	Superior	Erie
Tier 1	9	8	10	5	1	1

Note: The number of site visits per municipality was dependant upon the number of PACE contract visits in that municipality (ex: Boulder and Longmont) and the number of “un-certified” operations that needed assistance. In addition, all Keep it Clean Partners had evaluation audits/site visits conducted by an independent auditor and PACE staff.

Tier 2 Municipal Operation Outreach

Tier 2 sources were identified by PACE as the operations with the next highest potential to pollute stormwater that were not designated as Tier 1 operations. These facilities include **fire departments, building and facilities maintenance, recreation centers, swimming pools, and solid waste transfer/recycling centers.**

In 2005, PACE developed stormwater pollution prevention practices for these operations. These practices were developed using information from over 60 employees and managers in six focus group meetings.

Municipal operations in PACE’s Tier 2 approach often include a large number of buildings and facilities, making it impractical to conduct individual site visits. In addition, one manager generally oversees numerous Tier 2 operations. Therefore, PACE determined that the most effective and efficient approach

for the Tier 2 operation would be to provide pollution prevention training to the managers. Rather than a PACE “certification program” for Tier 2 operations, managers will be asked to meet industry specific criteria for the operations which they manage.

2006 Tier 2 Accomplishments

The table below summarizes the Tier 2 operation training and outreach efforts for each of the Keep it Clean communities.

Number of Tier 2 Site Visits per Partner

Type of Facility	Boulder	Boulder County	Longmont	Louisville	Superior	Erie
Tier 2	2	5	5	1	2	1

- ◆ Conducted 15 site visits and 5 phone contacts.
- ◆ Provided stormwater pollution prevention training to 32 employees at 5 *Stormwater 102* training sessions.
- ◆ Offered 8 different training and held 5 workshops for Tier 2 operations.
- ◆ Contacted 4 fire departments and Boulder County Sheriff’s dispatch to offer stormwater training sessions at their stations or during staff meetings.
- ◆ Met with City of Boulder first responders regarding illegal discharge reporting.

2006 Training

Three different stormwater training presentations were developed:

- ◆ *Stormwater 101* for Tier 1 Operations
(Fleet, Parks, Golf Course, Street and Storm Drain Maintenance)
- ◆ *Stormwater 102* for Tier 2 Operations
(Municipal Fire Departments, Building & Facilities Maintenance Departments)
- ◆ *Stormwater 103* for any facility or operations managers.

Stormwater 101 and *102* gave the employees basic information on stormwater compliance, illicit discharge identification and reporting, local contact information, and best management practices to prevent stormwater pollution. *Stormwater 103* focused on compliance with each municipality’s stormwater permit and how to stay in compliance. The *PowerPoint* presentations were placed on the PACE website (www.pacepartners.com) for easy access by all employees. Over 150 employees were trained in total.

- ◆ 95 employees attended 4 *Stormwater 101* Training Sessions.
- ◆ 32 employees attended 5 *Stormwater 102* Training Sessions.
- ◆ 25 managers attended 3 *Stormwater 103* Training Workshops.

2006 Additional Accomplishments

- ◆ Distributed 4 stormwater newsletters to both Tier 1 and Tier 2 operations and 94 employees.
- ◆ Tracked conformance with BMPs in the PACE database and prepared certified and un-certified facilities lists.
- ◆ Offered assistance to all Partners to create an inventory of minimal industrial discharge (MINDI) permit sources within each municipality. The Partners agreed to review their municipality’s sources and give PACE a list of potential sources.
- ◆ Reviewed MINDI Permit and Treated Water Management Plan requirements at the November *Stormwater 103* training session.
- ◆ Offered assistance/training on illicit discharge reporting and identification to emergency response personnel (Boulder County Sheriff Dispatch and City of Boulder responders). This offer was not accepted; however, PACE staff attended a meeting at the City of Boulder to provide input on responding to illicit discharges.
- ◆ Developed stormwater protection practices for special events/fairs.

2007 Goals

Tier 1 Facilities

- ◆ Continue to work with facilities that are yet to achieve stormwater certification.
- ◆ Review plans for proposed structural BMPs.
- ◆ Conduct site visits for certification follow-up.
- ◆ Conduct Stormwater 101 training sessions for new employees.
- ◆ Provide on-site training sessions as requested by operations managers.
- ◆ Conduct “on-the-job” or “tailgate” sessions to certified operations.
- ◆ Provide municipal contractor training (concrete, road construction, or paving companies or other, as needed).

Tier 2 Operations

- ◆ Conduct site visits of municipal facilities.
- ◆ Conduct on-site Stormwater 102 training sessions.

Permitted Facilities

- ◆ Conduct site visits to municipal facilities with state stormwater discharge permits for compliance assistance.

Other

- ◆ Meet with police, code enforcement, and county sheriff on stormwater compliance and illegal discharges.
- ◆ Provide outreach to municipal responders on illegal discharge reporting.
- ◆ Continue data management efforts and enhancement.
- ◆ Send quarterly newsletters on key issues; highlight innovations and accomplishments.
- ◆ Design and develop a municipal ownership outreach campaign to educate all employees on stormwater pollution prevention. This will include posters, stickers, laminated cards, hats, storm drain markers, and/or other marketing tools.
- ◆ Develop a recognition/incentive program that rewards employees who report illegal discharges and/or implement BMPs/good housekeeping practices.
- ◆ Participate in the development of the 2008-2012 Keep it Clean Plan.

Program Element Changes

None

Budget

Proposed: \$76,074

Actual: \$77,018

Overage: \$944

Overage due to project coordinator’s labor.

Members of Workgroup

Ken Mason, City of Louisville

Cal Youngberg, City of Longmont

Donna Scott, City of Boulder

2006

**Municipal Stormwater Discharge Permit
Annual Report Table**

The following are the 2006 permit activities
for the Six Minimum Control Measures
submitted
to the State Water Quality Control Division

MCM 1. Public Education and Outreach

GENERAL SUMMARY: The Keep it Clean Partnership contracts with the City of Boulder to provide programs required for MCM 1 and MCM 2, which included producing brochures, the water quality education program, and the Keep it Clean website.

Individual Partners were responsible for distributing brochures and directing their citizens to the Keep it Clean website.

1. IMPLEMENTATION STATUS OF PROGRAMS: The following table outlines the status of the measurable goals for this MCM.

2006 MCM 1 MEASURABLE GOALS	2006 STATUS <i>Completion Date: December 31, 2006</i>	Changes Proposed?																																								
<p>Brochures or fact sheets – will be developed for targeted activities as necessary by 12/31/06.</p>	<p><u>KEEP IT CLEAN ACTIVITIES</u> A total of 16,749 Spanish and English language <i>Keep it Clean</i> brochures were distributed in 2006 throughout Keep it Clean communities at school, community, business outreach, and residential direct-mail programs.</p> <p>In total, Keep it Clean distributed 69,449 brochures and inserts in 2006.</p> <p><u>INDIVIDUAL ACTIVITIES</u> The total number of brochures distributed since 2003 and in 2006 are listed below:</p> <table border="1" data-bbox="446 1182 1206 1619"> <thead> <tr> <th>Partner</th> <th>Number of House-holds</th> <th>Number Distributed by Partners in 2003-2005</th> <th>Number Distributed by Partners in 2006</th> <th>% Distributed to Date of Total House-holds</th> </tr> </thead> <tbody> <tr> <td>Boulder County</td> <td>8,900</td> <td>46,606</td> <td>4,873</td> <td>579</td> </tr> <tr> <td>Boulder</td> <td>39,596</td> <td>96,346</td> <td>50,076</td> <td>370</td> </tr> <tr> <td>Longmont</td> <td>26,667</td> <td>30,512</td> <td>2,101</td> <td>123</td> </tr> <tr> <td>Louisville</td> <td>7,216</td> <td>9,030</td> <td>6,450</td> <td>215</td> </tr> <tr> <td>Superior</td> <td>4,500</td> <td>5,332</td> <td>459</td> <td>133</td> </tr> <tr> <td>Erie</td> <td>3,750</td> <td>9,900</td> <td>7,591</td> <td>466</td> </tr> <tr> <td>TOTAL</td> <td>90,629</td> <td>197,726</td> <td>69,449</td> <td>294</td> </tr> </tbody> </table> <p>General Community Outreach in 2006:</p> <ul style="list-style-type: none"> ◆ Appeared as the H₂O Jo mascot at 12 community events in the Keep it Clean communities and an additional 19 events throughout Colorado. ◆ Distributed 26,350 campaign materials, including 550 sticky note pads, 4,160 magnets, 7,430 tattoos, 12,000 stickers, and 2,210 <i>Adventures of H₂O Jo and Flo</i> activity books. 	Partner	Number of House-holds	Number Distributed by Partners in 2003-2005	Number Distributed by Partners in 2006	% Distributed to Date of Total House-holds	Boulder County	8,900	46,606	4,873	579	Boulder	39,596	96,346	50,076	370	Longmont	26,667	30,512	2,101	123	Louisville	7,216	9,030	6,450	215	Superior	4,500	5,332	459	133	Erie	3,750	9,900	7,591	466	TOTAL	90,629	197,726	69,449	294	<p>No</p>
Partner	Number of House-holds	Number Distributed by Partners in 2003-2005	Number Distributed by Partners in 2006	% Distributed to Date of Total House-holds																																						
Boulder County	8,900	46,606	4,873	579																																						
Boulder	39,596	96,346	50,076	370																																						
Longmont	26,667	30,512	2,101	123																																						
Louisville	7,216	9,030	6,450	215																																						
Superior	4,500	5,332	459	133																																						
Erie	3,750	9,900	7,591	466																																						
TOTAL	90,629	197,726	69,449	294																																						

2006 MCM 1 MEASURABLE GOALS	2006 STATUS <i>Completion Date: December 31, 2006</i>	Changes Proposed?
<p>Water Quality Curriculum—continue to be distributed to Boulder Valley School District (BVSD) and St. Vrain Valley School District (SVVSD) by 12/31/06.</p>	<p><u>KEEP IT CLEAN PROGRAMS</u></p> <p>In 2006, the curriculum was again distributed through the annual Watershed teacher training sessions.</p> <p><u>Teacher Training</u> All Boulder Valley School District (BVSD) and St. Vrain Valley School District (SVVSD) K-5th grade teachers and 6th-12th grade science teachers were invited to attend a free two-day training.</p> <p>In August, 18 educators attended the training. It is estimated that the educators that attended the 2006 training will reach over 1,430 students in the 2006-2007 school year.</p> <p><u>School-Based Programs</u></p> <ul style="list-style-type: none"> ◆ Promoted the “Get to Know your H₂O” Education Program. ◆ Conducted 216 stormwater education programs, reaching a total of 3,808 students. ◆ 14 teachers checked out equipment to conduct classroom programs, reaching 611 students. ◆ 150 students participated in the “Rain Rain” water pollution prevention program. ◆ Partnered with the <i>Daily Camera</i> newspaper for the second time to create the “Get to Know Your H₂O” educational insert. The 16-page insert featured H₂O Jo and Flo and a series of water protection and conservation activities. Approximately 2,000 papers were requested by teachers for distribution in 48 schools in the 2 local school districts, and the remaining 1,000 papers have been and continue to be distributed to groups through the Keep it Clean Education Program. 	<p>No</p>
<p>Website - stormwater information will continue to be posted on the Keep it Clean website by 12/31/06.</p>	<p><u>KEEP IT CLEAN PROGRAMS</u></p> <p>Background information on the Keep it Clean Partnership, including the six MCMs, along with specific information promoting the stormwater education program, storm drain stenciling program, training opportunities, informational brochures, and annual reports are provided on the BASIN website (www.KeepitCleanPartnership.org). This website is updated frequently to include the most current Keep it Clean Partnership information.</p>	<p>No</p>

2006 MCM 1 MEASURABLE GOALS	2006 STATUS <i>Completion Date: December 31, 2006</i>	Changes Proposed?												
	<p>Keep it Clean realized an increase in web visitors in 2006.</p> <table border="1" data-bbox="461 342 1206 552"> <thead> <tr> <th>Year</th> <th>Average Monthly Requests</th> <th>Average Monthly Distinct Hosts Served</th> </tr> </thead> <tbody> <tr> <td>2004</td> <td>1,587</td> <td>703</td> </tr> <tr> <td>2005</td> <td>3,363</td> <td>859</td> </tr> <tr> <td>2006</td> <td>3,029</td> <td>1,543</td> </tr> </tbody> </table> <p><u>INDIVIDUAL PROGRAMS</u> Each Partner references the Keep it Clean website on their own communities' websites as listed below: Boulder County: www.bouldercountywater.org Boulder: www.boulderutilities.net Longmont: www.ci.longmont.co.us Louisville: www.ci.louisville.co.us Superior: www.townofsuperior.com Erie: www.ci.erie.co.us</p>	Year	Average Monthly Requests	Average Monthly Distinct Hosts Served	2004	1,587	703	2005	3,363	859	2006	3,029	1,543	
Year	Average Monthly Requests	Average Monthly Distinct Hosts Served												
2004	1,587	703												
2005	3,363	859												
2006	3,029	1,543												

2. **RESULTS OF INFORMATION COLLECTED:** No data required.
3. **INSPECTION AND ENFORCEMENT:** Not applicable for this MCM.
4. **PROPOSED CHANGES:** None
5. **ACTIVITIES FOR NEXT REPORTING CYCLE:** In accordance with the permit application, the planned stormwater activities for 2007 are as listed below.

Brochure or fact sheets: will be developed for targeted activities, as necessary, by 12/31/07.

Water Quality Curriculum: continue outreach to both BVSD and SVVSD by 12/31/07.
--

Website: information will continue to be posted on the Keep it Clean website by 12/31/07.
--

6. **NOTICE OF PROGRAM ELEMENT OPERATION BY A SECOND PARTY:** Per the original applications, the Keep it Clean Partnership is performing the Shared and Common Programs for public education and outreach.

MCM 2. Public Participation and Involvement

GENERAL SUMMARY: The Keep it Clean Partnership contracted with the City of Boulder’s Stormwater Education Program to develop programs for MCM 2, which included the annual public meeting presentation and the storm drain stenciling program.

Individual Partners were responsible for scheduling and hosting an annual public meeting in each of their communities. In addition, communities were responsible for ensuring that a minimum of 5% of their storm drains were stenciled.

1. IMPLEMENTATION STATUS OF PROGRAMS: The following table outlines the status of the measurable goals for this MCM.

2006 MCM 2 MEASURABLE GOALS	2006 STATUS <i>Completion Date: December 31, 2006</i>	Changes Proposed?																																											
<p>Annual Public Meetings - will be conducted in all Partner communities by 12/31/06. An alternative annual meeting format will be developed. This may include special events, presentation of Keep it Clean Program updates to councils, commissioners, citizen advisory boards, and/or public forums; distribution of feedback forms; or other means to solicit public input into the Keep it Clean Partnership and individual Partner community stormwater programs.</p>	<p><u>KEEP IT CLEAN PROGRAMS</u> Utilizing graphics and messages created for the ‘Keep it Clean’ water quality campaign, the ‘Keep it Clean’ outreach booth was developed. It includes hands-on, portable, engaging activities that serve as tools for community members to learn about non-point source pollution and recognize how their behaviors can affect our water quality.</p> <p>A total of 6,166 people visited the Keep it Clean event booth in 2006.</p> <p><u>INDIVIDUAL PROGRAMS</u> The Keep it Clean communities’ festivals or special events included:</p> <table border="1" data-bbox="467 1255 1203 1787"> <thead> <tr> <th>Partner</th> <th>Date of Meeting</th> <th>Meeting Description</th> <th>Number of Visitors</th> </tr> </thead> <tbody> <tr> <td rowspan="2">Boulder County</td> <td>9/14/06</td> <td>Niwot’s Farmer’s Market</td> <td>55</td> </tr> <tr> <td>7/27-31/06</td> <td>Boulder County Fair</td> <td>1,000</td> </tr> <tr> <td rowspan="5">Boulder</td> <td>5/20/06</td> <td>Community Clean-up Day</td> <td>400</td> </tr> <tr> <td>6-10/2006</td> <td>Boulder’s Farmer’s Market</td> <td>1,000</td> </tr> <tr> <td>08/06</td> <td>CU RA Resource Fair</td> <td>170</td> </tr> <tr> <td>10/1/06</td> <td>Fall Festival</td> <td>350</td> </tr> <tr> <td>12/4/06</td> <td>Lights of December Parade</td> <td>2,000</td> </tr> <tr> <td>Longmont</td> <td>7/8/06</td> <td>Rhythm on the River</td> <td>250</td> </tr> <tr> <td>Louisville</td> <td>6/10/2006</td> <td>Taste of Louisville</td> <td>297</td> </tr> <tr> <td>Superior</td> <td>9/9/06</td> <td>Chili Cook-off</td> <td>165</td> </tr> <tr> <td>Erie</td> <td>5/20/06</td> <td>Erie Town Fair</td> <td>479</td> </tr> </tbody> </table>	Partner	Date of Meeting	Meeting Description	Number of Visitors	Boulder County	9/14/06	Niwot’s Farmer’s Market	55	7/27-31/06	Boulder County Fair	1,000	Boulder	5/20/06	Community Clean-up Day	400	6-10/2006	Boulder’s Farmer’s Market	1,000	08/06	CU RA Resource Fair	170	10/1/06	Fall Festival	350	12/4/06	Lights of December Parade	2,000	Longmont	7/8/06	Rhythm on the River	250	Louisville	6/10/2006	Taste of Louisville	297	Superior	9/9/06	Chili Cook-off	165	Erie	5/20/06	Erie Town Fair	479	
Partner	Date of Meeting	Meeting Description	Number of Visitors																																										
Boulder County	9/14/06	Niwot’s Farmer’s Market	55																																										
	7/27-31/06	Boulder County Fair	1,000																																										
Boulder	5/20/06	Community Clean-up Day	400																																										
	6-10/2006	Boulder’s Farmer’s Market	1,000																																										
	08/06	CU RA Resource Fair	170																																										
	10/1/06	Fall Festival	350																																										
	12/4/06	Lights of December Parade	2,000																																										
Longmont	7/8/06	Rhythm on the River	250																																										
Louisville	6/10/2006	Taste of Louisville	297																																										
Superior	9/9/06	Chili Cook-off	165																																										
Erie	5/20/06	Erie Town Fair	479																																										

2006 MCM 2 MEASURABLE GOALS	2006 STATUS <i>Completion Date: December 31, 2006</i>	Changes Proposed?																																																																
<p>Storm Drain Stenciling Program will continue with target of 5% of storm drains by 12/31/06.</p>	<p><u>KEEP IT CLEAN PROGRAMS</u></p> <p>Storm Drain Stenciling Program: Keep it Clean education staff provided stormwater education programs and facilitated storm drain stenciling activities with over 215 youth and citizens in Keep it Clean communities.</p> <p>In 2006, Keep it Clean education staff continued to use curb markers and spray paint and stencils marking 652 storm drains.</p> <p>The Storm Drain Marking Program volunteers distributed 2,108 fish door hangers as part of the storm drain marking program in neighborhoods in 2006. The brightly colored, fish-shaped door hangers, available in both English and Spanish, inform residents about the storm drain marking program and provide tips on ways to protect and conserve local waters. The door hanger also lists the KeepitCleanPartnership.org website and the spill report line, 303-441-4444.</p> <p><u>INDIVIDUAL PROGRAMS</u></p> <p>All of the Partners exceeded the goal of stenciling 5% of their storm drains in 2006.</p> <table border="1" data-bbox="467 1062 1209 1381"> <thead> <tr> <th>Partner</th> <th>Total Storm Drains</th> <th>2003</th> <th>2004</th> <th>2005</th> <th>2006</th> <th>% of Total in 2006</th> <th>% of Total</th> </tr> </thead> <tbody> <tr> <td>Boulder County</td> <td>225</td> <td>82</td> <td>40</td> <td>31</td> <td>23</td> <td>10.2</td> <td>78</td> </tr> <tr> <td>Boulder</td> <td>4,180</td> <td>209</td> <td>439</td> <td>402</td> <td>264</td> <td>6.3</td> <td>31</td> </tr> <tr> <td>Longmont</td> <td>1,820</td> <td>99</td> <td>95</td> <td>115</td> <td>170</td> <td>9.3</td> <td>26</td> </tr> <tr> <td>Louisville</td> <td>600</td> <td>43</td> <td>137</td> <td>31</td> <td>31</td> <td>5.2</td> <td>40</td> </tr> <tr> <td>Superior</td> <td>300</td> <td>22</td> <td>20</td> <td>74</td> <td>20</td> <td>6.7</td> <td>45</td> </tr> <tr> <td>Erie</td> <td>320</td> <td>62</td> <td>17</td> <td>162</td> <td>144</td> <td>45</td> <td>120</td> </tr> <tr> <td>Total</td> <td>7,445</td> <td>517</td> <td>748</td> <td>815</td> <td>652</td> <td>8.7</td> <td>37</td> </tr> </tbody> </table>	Partner	Total Storm Drains	2003	2004	2005	2006	% of Total in 2006	% of Total	Boulder County	225	82	40	31	23	10.2	78	Boulder	4,180	209	439	402	264	6.3	31	Longmont	1,820	99	95	115	170	9.3	26	Louisville	600	43	137	31	31	5.2	40	Superior	300	22	20	74	20	6.7	45	Erie	320	62	17	162	144	45	120	Total	7,445	517	748	815	652	8.7	37	<p>No</p>
Partner	Total Storm Drains	2003	2004	2005	2006	% of Total in 2006	% of Total																																																											
Boulder County	225	82	40	31	23	10.2	78																																																											
Boulder	4,180	209	439	402	264	6.3	31																																																											
Longmont	1,820	99	95	115	170	9.3	26																																																											
Louisville	600	43	137	31	31	5.2	40																																																											
Superior	300	22	20	74	20	6.7	45																																																											
Erie	320	62	17	162	144	45	120																																																											
Total	7,445	517	748	815	652	8.7	37																																																											

2. **RESULTS OF INFORMATION COLLECTED:** No data required.
3. **INSPECTION AND ENFORCEMENT:** Not applicable for this MCM.
4. **PROPOSED CHANGES:** None
5. **ACTIVITIES FOR NEXT REPORTING CYCLE:** In accordance with the permit application, the planned stormwater activities for 2006 are as listed below.

Annual public meetings will be conducted in all Partner communities by 12/31/07. An alternative annual meeting format will be developed. This may include special events; presentation of the Keep it Clean Program updates to councils, commissioners, citizen advisory boards, and/or public forums; distribution of feedback forms; or other means to solicit public input into the Keep it Clean Partnership and individual Partner community stormwater programs.

Storm Drain Stenciling Program will continue with target of 5% of storm drains by 12/31/07.

6. **NOTICE OF PROGRAM ELEMENT OPERATION BY A SECOND PARTY:** Per the original applications, the Keep it Clean Partnership is performing the shared and common programs for public participation and involvement.

MCM 3. Illicit Discharge Detection and Elimination

GENERAL SUMMARY: The Keep it Clean Partners have all adopted their illicit discharge ordinances and have written illicit discharge detection and elimination plans.

The Keep it Clean Partnership contracts with the Boulder County Partners for a Clean Environment (PACE) Program to provide stormwater pollution prevention outreach and materials to commercial businesses identified as potential significant contributors of pollutants to the MS4 (this is done in conjunction with MCM 1). These businesses include restaurants and vehicle service facilities.

Individual Partners were responsible for the mapping of their MS4s' outfalls.

1. IMPLEMENTATION STATUS OF PROGRAMS: The following table outlines the status of the measurable goals for this MCM.

2006 MCM 3 MEASURABLE GOALS	2006 STATUS <i>Completion Date: December 31, 2006</i>	Changes Proposed?
<p>MS4 Mapping - MS4 system mapping updated by 12/31/06.</p>	<p><u>INDIVIDUAL PROGRAMS</u> Mapping of MS4 outfalls is the responsibility of the individual Partners. The status of this mapping is as follows: Boulder County: updating outfall mapping in Transportation. Boulder: updating outfall mapping in Public Works. Longmont: updating outfall mapping in Public Works. Louisville: updating outfall mapping in Public Works. Superior: updating outfall mapping in Public Works. Erie: updating outfall mapping in Public Works.</p>	<p>No</p>
<p>Legal Prohibition and Enforcement- Illicit discharge hotline and database implemented by 12/31/06.</p>	<p><u>KEEP IT CLEAN PROGRAMS</u> The Boulder County Communications number 303-441-4444 was identified as the Keep it Clean Partnership hotline. The website www.BASIN.org hosts the Keep it Clean spill response and tracking system.</p> <p><u>INDIVIDUAL PROGRAMS</u> Individual Partners adopted their illicit discharge regulatory mechanisms: Boulder County: Ordinance was adopted on September 13, 2005. Boulder: Ordinance approved December 6, 2004. Longmont: Ordinance approved January 12, 2005. Louisville: Ordinance approved December 21, 2004. Superior: Ordinance approved December 13, 2004. Erie: Ordinance approved November 9, 2004.</p>	<p>No</p>

2006 MCM 3 MEASURABLE GOALS	2006 STATUS <i>Completion Date: December 31, 2006</i>	Changes Proposed?
Business Education Program- Implementation continued by 12/31/06.	<p><u>KEEP IT CLEAN PROGRAMS</u></p> <p>PACE evaluated stormwater pollution prevention criteria and provided information during site visits to 209 restaurant facilities and 105 vehicle service facilities.</p> <p>PACE visited and distributed outreach materials for both the owners and customers to all the do-it-yourself auto part (5) and rental stores (3) identified in the Partners' permitted areas.</p> <p>PACE sent outreach materials to 400 commercial facility managers and met with 35 individuals.</p> <p>PACE developed and mailed 200 restaurant and 500 facility brochures.</p> <p><u>INDIVIDUAL PROGRAMS</u></p> <p>The following facilities visited in each of the Partner's communities:</p> <p>Boulder County: 9 restaurants, 1 vehicle service facility. Boulder: 87 restaurants, 77 vehicle service facilities. Longmont: 79 restaurants, 19 vehicle service facilities. Louisville: 27 restaurants, 5 vehicle service facilities. Superior: 4 restaurants, 3 vehicle service facilities. Erie: 3 restaurants, 0 vehicle service facilities.</p>	No

2006 MCM 3 MEASURABLE GOALS	2006 STATUS <i>Completion Date: December 31, 2006</i>	Changes Proposed?
Illicit Discharge Detection Plan: Continue implementation of Illicit Discharge Detection Plan by 12/31/06.	<p><u>KEEP IT CLEAN PROGRAMS</u> The WASH model for the Illicit Discharge Detection and Elimination Plan was drafted and distributed to the Partners in November 2004.</p> <p><u>INDIVIDUAL PROGRAMS</u> Each Partner has modified the Illicit Discharge Detection and Elimination Plan model for their communities and is implementing the plan.</p> <p>Illicit discharge detection was incorporated into the general PACE municipal employee trainings.</p>	

2. RESULTS OF INFORMATION COLLECTED: No data required.

3. INSPECTION AND ENFORCEMENT:

Partner	Number of Responses*	Enforcement Actions
Boulder County	9+0+2	5 verbal
Boulder	26 + 120 +51	10 verbal, 57 written warnings, 3 NOV
Longmont	6+31+28	11 verbal, 2 written warnings, 15 NOV
Louisville	2 + 8 +0	1 NOV
Erie	0+0+2	2 verbal
Superior	2+0+0	2 verbal

* The first number is from the BASIN database; the second number is either fire department responses or individual tracking; third number is regarding public reporting on construction sites.

4. PROPOSED CHANGES: None.

5. ACTIVITIES FOR NEXT REPORTING CYCLE: Per the permit application, the planned stormwater activities for 2006 are as listed below.

MS4 Mapping: MS4 system mapping updated by December 31, 2007.
Legal Prohibition and Enforcement: Continue implementation of Illicit Discharge Hotline, Ordinance and Response Plan by December 31, 2007.
Business Education Program: Implementation continued by December 31, 2007.
Illicit Discharge Detection Plan: Implementation continued by December 31, 2007.

6. NOTICE OF PROGRAM ELEMENT OPERATION BY A SECOND PARTY: In accordance with the original applications, the WASH Project is performing the shared and common programs for illicit discharge detection and elimination.

MCM 4. Construction Site Stormwater Runoff Control

GENERAL SUMMARY: The WASH Partners developed a model construction and post-construction ordinance in 2003. In 2004 and 2005, the ordinance language was adapted by the individual Partners' attorneys and adopted by their councils and boards. Standard operating procedures were developed and implementation began in 2005.

1. IMPLEMENTATION STATUS OF PROGRAMS: The following table outlines the status of the measurable goals for this MCM.

2006 MCM 3 MEASURABLE GOALS	2006 STATUS <i>Completion Date: December 31, 2006</i>	Changes Proposed?
Erosion Control Ordinance -	<p><u>INDIVIDUAL PROGRAMS</u> Individual Partners adopted their construction and post-construction regulatory mechanisms: Boulder County: Land Use Code adopted August 11, 2005. Boulder: Ordinance approved December 6, 2004. Longmont: Ordinance approved January 12, 2005. Louisville: Ordinance approved December 21, 2004. Superior: Ordinance approved December 13, 2004. Erie: Ordinance approved November 9, 2004.</p>	No
Erosion Control Standard Operating Procedures- Individual communities implement enforcement procedures by 12/31/06.	<p><u>KEEP IT CLEAN ACTIVITIES</u> Model SOP language was developed and approved by the WASH Partners for construction and post-construction on May 24, 2004.</p> <p><u>INDIVIDUAL PROGRAMS</u> Boulder County: SOPs drafted and implemented. Boulder: Enforcement procedures implemented. Longmont: SOPs drafted and implemented. Louisville: Enforcement procedures implemented. Superior: Enforcement procedures implemented. Erie: SOPs drafted and implemented.</p>	
Public Input- Individual communities implement public response tracking system by 12/31/06.	<p><u>INDIVIDUAL PROGRAMS</u> Boulder County: Tracking system resides in a database on the County network in the Land Use Department. Boulder: Tracking system resides in Landlink, a development database, on the city network. Longmont: Tracking system resides in Customer Request Tracking System (CRTS) on city network. Louisville: Tracking system resides in Public Works. Superior: Tracking system resides in Public Works. Erie: Tracking system resides in Public Works.</p>	

<p>Training and Education for Construction Site Operators and Inspectors: Implement WASH contractor training program by 12/31/06.</p>	<p><u>KEEP IT CLEAN ACTIVITIES</u> The Keep it Clean Partnership has been implementing a training program for construction site operators and inspectors since 2003. Most of the Keep it Clean Partners require, by ordinance, that the individuals inspecting erosion control and sediment removal practices be certified by an acceptable program.</p> <p>In 2006, 129 individuals from the private and public construction sector received certification in the Keep it Clean Erosion Control Training Program.</p>	
--	--	--

2. RESULTS OF INFORMATION COLLECTED: No data required.

3. INSPECTION AND ENFORCEMENT:

WASH Partner	Number of Active Construction Sites Over an Acre	Number of Inspections	Enforcement Actions
Boulder County	4	48	0
Boulder	9	Continuous	Multiple verbal warnings, no enforcement required.
Longmont	31	63	0
Louisville	11	61	6
Erie	12	Continuous	Multiple verbal warnings, no enforcement required
Superior	2	30	0

4. PROPOSED CHANGES TO PROGRAM AREA: None.

5. ACTIVITIES FOR NEXT REPORTING CYCLE: In accordance with the permit application, the planned stormwater activities for 2007 are as listed below.

<p>Erosion Control Standard Operating Procedures: Review 100% of all erosion control plans by December 31, 2007.</p>

6. NOTICE OF PROGRAM ELEMENT OPERATION BY A SECOND PARTY: In accordance with the original applications, the WASH Project is performing the shared and common programs for construction site stormwater runoff control.

MCM 5. Post-Construction Stormwater Management

GENERAL SUMMARY: The WASH Partners developed a model construction and post-construction ordinance in 2003. In 2004 and 2005, the ordinance language was adapted by the individual Partners' attorneys and adopted by their councils and boards. Standard operating procedures (SOPs) were developed, and implementation began in 2005.

1. IMPLEMENTATION STATUS OF PROGRAMS: The following table outlines the status of the measurable goals for this MCM.

2006 MCM 5 MEASURABLE GOALS	2006 STATUS <i>Completion Date: December 31, 2006</i>	Changes Proposed?
Post-Construction Ordinance	<p><u>INDIVIDUAL PROGRAMS</u> Individual Partners adopted their construction and post-construction regulatory mechanisms: Boulder County: Land Use Code adopted August 11, 2005. Boulder: Ordinance approved December 6, 2004. Longmont: Ordinance approved January 12, 2005. Louisville: Ordinance approved December 21, 2004. Superior: Ordinance approved December 13, 2004. Erie: Ordinance approved November 9, 2004.</p>	No
Development Review: Implement SOP's for site plan review by 12/31/06.	<p><u>KEEP IT CLEAN ACTIVITIES</u> Model SOP language was developed and approved by the WASH Partners for construction and post-construction requirements on May 24, 2004.</p> <p><u>INDIVIDUAL PROGRAMS</u> Boulder County: BMP selection and SOPs implemented. Boulder: Site plans reviewed. Longmont: BMP selection and SOPs implemented. Louisville: Site plans reviewed. Superior: Site plans reviewed. Erie: BMP selection and SOPs implemented.</p>	No
Design Criteria and Standards - Individual communities implement monitoring and inspection procedures of construction of BMPs and post-construction maintenance by 12/31/06.	<p><u>KEEP IT CLEAN ACTIVITIES</u> Model SOP language was developed and approved by the WASH Partners for construction and post-construction on May 24, 2004.</p> <p><u>INDIVIDUAL PROGRAMS</u> Boulder County: Implementing inspection procedures. Boulder: Implementing inspection procedures. Longmont: Implementing inspection procedures. Louisville: Implementing inspection procedures. Superior: Implementing inspection procedures. Erie: Implementing inspection procedures.</p>	No

2. RESULTS OF INFORMATION COLLECTED: No data required.

3. INSPECTION AND ENFORCEMENT:

WASH Partner	Number of Approved Post-Construction BMPs since Adoption of Ordinance	Number of Inspections of Post-Construction BMPs	Enforcement Actions	Comments
Boulder County	0	0	0	
Boulder	8	0	0	Inspect as part of active site Inventoried 739 existing
Longmont	11	0	0	
Louisville	1	1	0	
Erie	15	8	7 pending	Debris removal Install outlet structure Regrade bank
Superior	1	12	0	

4. PROPOSED CHANGES TO PROGRAM AREA: None.

5. ACTIVITIES FOR NEXT REPORTING CYCLE: In accordance with the permit application, the planned stormwater activities for 2006 are as listed below.

BMP Operation and Maintenance: Individual communities implement enforcement procedures by December 31, 2007.

6. NOTICE OF PROGRAM ELEMENT OPERATION BY A SECOND PARTY: In accordance with the original applications, the WASH Project is performing the shared and common programs for post-construction stormwater management.

MCM 6. Pollution Prevention and Good Housekeeping for Municipal Operations

GENERAL SUMMARY: The WASH Project contracts with the Boulder County Partners for a Clean Environment (PACE) Program to develop an outreach program for municipal operations.

1. IMPLEMENTATION STATUS OF PROGRAMS: The following table outlines the status of the measurable goals for this MCM.

2006 MCM 6 MEASURABLE GOALS	2006 STATUS <i>Completion Date: December 31, 2006</i>	Changes Proposed?
<p>PACE – Municipal Program - Continue working toward <i>certification</i> of all Tier 1 facilities (vehicle, street, and storm drainage maintenance, and parks/golf courses). Continue training and outreach to all Tier 2 operations (facility maintenance, fire departments and waste transfer centers). Evaluate program and recommend changes by 12/31/2006.</p>	<p><u>KEEP IT CLEAN ACTIVITIES</u> PACE continues to evaluate municipal operations’ stormwater pollution prevention certification criteria, both structural and non-structural. Municipal operations are categorized into two tiers, based on an operation’s potential stormwater pollution threat.</p> <p>Tier 1 Facilities (fleet, street, and storm drainage maintenance, and parks/golf courses) have been provided with a stormwater pollution prevention binder containing the applicable BMPs, WASH/PACE criteria, a model spill response plan, and a training log.</p> <ul style="list-style-type: none"> ◆ 72% (32 out of 42) of Tier 1 facilities were certified. ◆ Conducted 34 site visits to assist facilities with certification ◆ Reviewed 6 certification plans and certified 4 operations <p>Tier 2 Operations (fire departments, building and facilities maintenance, recreation centers, swimming pools, and solid waste transfer/recycling centers) were identified by PACE as the facilities or operations with the next highest potential to pollute stormwater that were not designated as “Tier 1” facilities.</p> <ul style="list-style-type: none"> ◆ Conducted 15 site visits and 5 phone contacts. <p>Overall Training</p> <ul style="list-style-type: none"> ◆ 95 employees at 4 <i>Stormwater 101</i> trainings. ◆ 32 employees at 5 <i>Stormwater 102</i> trainings. ◆ 25 managers at 3 <i>Stormwater 103</i> trainings. <p><u>INDIVIDUAL PROGRAMS</u> Tier 1 Individual Partners were responsible for working with PACE staff to ensure the PACE inspection and certification process would be implemented. The following percentage of municipal operations were certified in 2006:</p>	<p>Yes-see change that was submitted in 2005</p>

	<p>Boulder County: 4/7 or 55% certified Boulder: 12/14 or 86% certified Longmont: 0/8 or 0% certified Louisville: 6/6 or 100% certified Superior: 2/2 or 100% certified Erie: 3/3 or 100% certified</p> <p>Tier 1 Facilities visited by PACE in 2006:</p> <table border="1"> <thead> <tr> <th>WASH Partner</th> <th>Number of Tier 1 Facilities visited</th> </tr> </thead> <tbody> <tr> <td>Boulder County</td> <td>8</td> </tr> <tr> <td>Boulder</td> <td>9</td> </tr> <tr> <td>Longmont</td> <td>10</td> </tr> <tr> <td>Louisville</td> <td>5</td> </tr> <tr> <td>Superior</td> <td>1</td> </tr> <tr> <td>Erie</td> <td>1</td> </tr> </tbody> </table> <p>Tier 2 Individual Partners were responsible for working with PACE staff to ensure the PACE inspection and certification process would be implemented.</p> <p>Tier 2 Operations visited by PACE in 2006:</p> <table border="1"> <thead> <tr> <th>WASH Partner</th> <th>Number of Tier 2 Facilities visited</th> </tr> </thead> <tbody> <tr> <td>Boulder County</td> <td>5</td> </tr> <tr> <td>Boulder</td> <td>2</td> </tr> <tr> <td>Longmont</td> <td>5</td> </tr> <tr> <td>Louisville</td> <td>1</td> </tr> <tr> <td>Superior</td> <td>2</td> </tr> <tr> <td>Erie</td> <td>1</td> </tr> </tbody> </table>	WASH Partner	Number of Tier 1 Facilities visited	Boulder County	8	Boulder	9	Longmont	10	Louisville	5	Superior	1	Erie	1	WASH Partner	Number of Tier 2 Facilities visited	Boulder County	5	Boulder	2	Longmont	5	Louisville	1	Superior	2	Erie	1	
WASH Partner	Number of Tier 1 Facilities visited																													
Boulder County	8																													
Boulder	9																													
Longmont	10																													
Louisville	5																													
Superior	1																													
Erie	1																													
WASH Partner	Number of Tier 2 Facilities visited																													
Boulder County	5																													
Boulder	2																													
Longmont	5																													
Louisville	1																													
Superior	2																													
Erie	1																													

- 2. **RESULTS OF INFORMATION COLLECTED:** No data required.
- 3. **INSPECTION AND ENFORCEMENT:** Not applicable for this MCM for 2006.
- 4. **PROPOSED CHANGES TO PROGRAM AREA:**

Change 1

- A) **MCM 6, Pollution Prevention and Good Housekeeping for Municipal Operations**
- B) **2007 measurable goal - PACE – Municipal Program** - Implement recommended changes.
- C) BMP is essentially the same, but implementation is being clarified.
- D) Revised **2007 measurable goal** - The PACE Program will *certify* 100% of the Tier 1 facilities (storm drain maintenance, streets, fleets, parks and golf courses, streets). Conduct training and outreach to all Tier 2 operations (facility maintenance, fire departments and waste transfer centers). Implement recommended changes.
- E) The WASH Partners would like to clarify the approach that has been determined to be most effective to achieve oversight of the WASH Partner municipal operations. The PACE Program will continue to certify the Tier 1 municipal facilities (storm drain maintenance, streets, fleets, parks and golf courses, streets). The Tier 1 facilities tend to be fixed and can be evaluated. The Tier 2 operations (facility maintenance, fire departments, and waste transfer centers (that do not hold a NPDES permit) will be trained and BMP outreach conducted, but certification of these

operations will not be performed.

5. ACTIVITIES FOR NEXT REPORTING CYCLE: In accordance with the permit application, the planned stormwater activities for 2007 are as listed below.

PACE – Municipal Program: The PACE Program will *certify* 100% of the Tier 1 facilities (storm drain maintenance, streets, fleets, parks and golf courses, streets). Conduct training and outreach to all Tier 2 operations (facility maintenance, fire departments, and waste transfer centers). Implement recommended changes by December 31, 2007.

6. NOTICE OF PROGRAM ELEMENT OPERATION BY A SECOND PARTY: In accordance with the original applications, the WASH Project is performing the shared and common programs for pollution prevention and good housekeeping for municipal operations.

Partnership Working Agreement

Keep it Clean Partners Are:

- Dedicated to the stated goal and objectives of the project.
- Active participants, attending meetings and voicing opinions equally.
- Willing to share resources and data.
- Clear about their agencies' needs and interest in participating in the project.
- Completing the bulk of Keep it Clean Partnership work in subgroups.

Keep it Clean Partners Will:

- Be prompt to meetings and participate to the highest level of their ability.
- Maintain focus, prioritize all actions, and encourage involvement of all.
- Understand that not all communities have the resources to attend every meeting.
- Complete assigned tasks that are agreed upon in the group.
- Stay informed about discussions and decisions that take place at Keep it Clean meetings in their absence.

Keep it Clean Partners Are:

- Participating in good faith and working towards the identified common goal and objectives.
- Committed to the protection of water quality within the Boulder Creek and St. Vrain River watersheds.
- Committed to sharing information and resources with other Keep it Clean partners.
- Committed to developing strategies and solution that benefit the general public and represent the shared goal and objectives of the Keep it Clean Partnership.

Keep it Clean Partnership Decisions:

- Will be discussed in an organized manner and the process will be open to all
- Will be made by consensus, an approach to find an inclusive solution that everyone can support

Keep it Clean Partners:

- Understand compromise may be necessary to reach Keep it Clean common goals
- Show a commitment to mediate disagreement

Partner Contact Information

City of Boulder

Jeff Arthur, Civil Engineer II
City of Boulder Public Works
1739 Broadway, Suite 300
Boulder, CO 80306-0791
303-441-4418
arthurj@bouldercolorado.gov

Donna Scott
Stormwater Quality Specialist
City of Boulder Water Quality
4049 75th Street
Boulder, CO 80301
303-413-7364
scottd@bouldercolorado.gov

Betty Solek
City of Boulder Water Quality
4049 75th Street
Boulder, CO 80301
303-413-7366
soleke@bouldercolorado.gov

County of Boulder

Dale Case, Planner
Boulder County Land Use Planning
PO Box 471
Boulder, CO 80306
303-441-3930
dcase@co.boulder.co.us

Denise Grimm, Planner
Boulder County Land Use Planning
PO Box 471
Boulder, CO 80306
303-441-3930
dgrimm@co.boulder.co.us

Janice Lopitz, WASH Coordinator
Boulder County Public Health
3450 Broadway
Boulder, CO 80304
303-441-1439
jlopitz@co.boulder.co.us

Dave Webster
Boulder County Transportation/Engineering
PO Box 471
Boulder, CO 80306
720-564-2660
dwebster@co.boulder.co.us

Mark Williams, Water Quality
Boulder County Public Health
3450 Broadway
Boulder, CO 80304
303-441-1143
mwilliams@co.boulder.co.us

City of Longmont

Cal Youngberg
City of Longmont
350 Kimbark Street
Longmont, CO 80501
303-651-8399
cal.youngberg@ci.longmont.co.us

Ela Nelson, Civil Engineer
City of Longmont
350 Kimbark Street
Longmont, CO 80501
303-774-4390
ela.nelson@ci.longmont.co.us

Town of Erie

Wendi Palmer
Town of Erie
645 Holbrook
Erie, CO 80516
303-926-2875
wpalmer@ci.erie.co.us

City of Louisville

Ken Mason
City of Louisville Public Works
749 Main Street
Louisville, CO 80027
303-335-4780
masonk@ci.louisville.co.us

Tom Phare
City of Louisville Public Works
749 Main Street
Louisville, CO 80027
303-335-4601
pharet@ci.louisville.co.us

Town of Superior

Dave Takeda
RG Consulting Engineers, Inc.
1331 17th Street Suite 710
Denver, CO 80202
303-293-8107
dtakeda@rgengineers.com

Judy Hauschulz
Town of Superior
124 East Coal Creek Drive
Superior, CO 80027
303-499-3675
judyh@townofsuperior.com

Other Participants

Pam Milmoe
Boulder County Public Health
3450 Broadway
Boulder, CO 80304
303-441-1189
pmilmoe@co.boulder.co.us

Bill Hayes
Boulder County Public Health
3450 Broadway
Boulder, CO 80304
303-441-1574
bhayes@co.boulder.co.us

Curry Rosato
Watershed Outreach Coordinator
City of Boulder Water Quality
4049 75th Street
Boulder, CO 80301
303-413-7365
rosatoc@ci.boulder.co.us

Kathy Dolan
CDPHE, WQCD-P-B2
4300 Cherry Creek Drive South
Denver, CO 80246-1530
303-692-3596
kathy.dolan@state.co.us

Nathan Moore
CDPHE
WQCD-P-B2
4300 Cherry Creek Drive South
Denver, CO 80246-1530
303-692-3555
nathan.moore@state.co.us

